



SOLD Spacious 4 bdr family house, 265 m², garden, garage, Koliba
Bratislava III - Koliba - Bellova

FOR SALE

769 000 €
(2 900 € / m²)

Property ID: 627916

Condition

Condition: reconstructed
Furnishing: unfurnished

Size

Number of rooms: 5
Usable area: 265 m²
Land area: 374 m²
Built up area: 131 m²

Floor

Number of floors: 3

Parking

Garage: 2 cars

Property equipment

Bathroom: 2x, bath and shower
Balcony: yes - 1
Terrace: 30.00 m²
Air condition: yes
Fire place: yes



Ing. Zuzana Kanská

+421 903 455 954
kanska@expat.sk



add this contact to
your mobile

Property description

Spacious 4 - bedroom family house, 265 m², beautiful landscaped garden (243 m²), double garage;

We exclusively offer for sale a 3 - storey family house in Koliba, after a complete reconstruction (2015).

The family house is located in a sought-after location in Koliba on a quiet street with family houses.

Disposition:

The ground floor consist of the main entrance with a spacious hall, living room connected to the dining area and kitchen, entrance to a large terrace (24 m²) overlooking the maintained garden. From the kitchen there is access to a smaller terrace (8 m²) and to the garden (fruit bushes and trees), there is also 1 large guest room (26 m²) with the possibility of division into 2 separate rooms (separate entrances), bathroom with shower and washbasin, separate toilet with washbasin.

Upstairs there are 3 separate rooms, wardrobe (3.43 m²), bathroom with bath, shower, two sinks, separate toilet with sink, balcony (4 m²).

There is a large garage for two cars (48 m²) in the basement, utility room (place for washing machine, dryer, boiler, water tank), food storage.

Virtual tour: <https://my.matterport.com/show/?m=v7oYNWfX5o6>

Equipment:

The house is connected to all utilities (sewerage, water, gas, electricity), the kitchen has built-in appliances: refrigerator with freezer, dishwasher, electric oven, plastic windows, electrically operated aluminum exterior blinds, the floors are ceramic tiles, large area parquet (wooden, laminate), air conditioning installed upstairs, underfloor heating on the ground floor, garage gate with remote control, the garden has a built-in irrigation system.

Location:

Bellova street is located in a quiet and popular area Koliba, with walking distance to the forest park (sports activities, relaxation, activities for children), 5 minutes by public transport, 10 minutes by car to the city centre and the highway bypass (AT, HU, CZ) , 5 minutes by car to a German school.

The price of the house is 769.000.- EUR. The price includes a commission for the agency.

We are looking forward to see you at the viewing!

More information: Ing. Zuzana Kanska, +421903455954, zuzana@expat.sk

@searched location @double garage @beautiful garden
@1 sold



3D preview



Link to property



Video

Rodinný dom - prízemie
Family house - ground floor

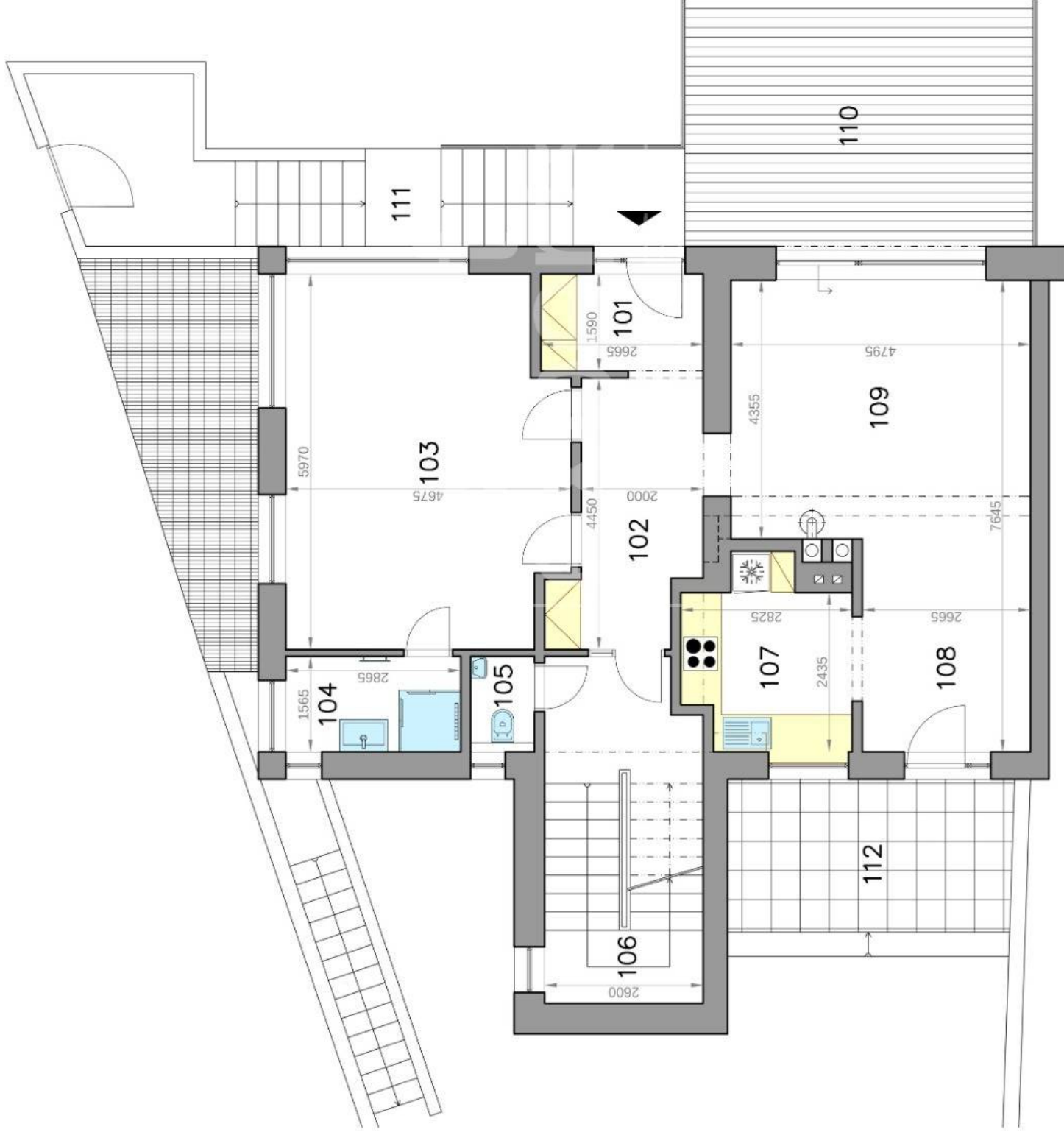
Bellova ulica
Bratislava III

LEGENDA MIESTNOSTÍ/LEGEND OF ROOMS

101	ZÁDVERIE/LEEWARD	4,24 m ²
102	CHODBA/HALL	8,65 m ²
103	IZBA/ROOM	26,02 m ²
104	KÚPEĽNA/BATHROOM	4,48 m ²
105	TOALETA/TOILET	1,64 m ²
106	SCHODISKO/STAIRWAY	14,53 m ²
107	KUCHYŇA/KITCHEN	7,21 m ²
108	JEDÁLEŇ/DINNING ROOM	8,76 m ²
109	OBYVACIA IZBA/LIVING ROOM	20,98 m ²
PLOCHA CELKOM/TOTAL AREA		96,51 m²
110	TERASA/TERRACE	22,80 m ²
111	VSTUP, SCHODY/ENTRANCE, STAIRS	18,40 m ²
112	TERASA, SCHODY/TERRACE, STAIRS	12,97 m ²



Výmery majú iba informatívny charakter
© Expat Experts / Ing. Miroslav Strelec



Rodinný dom - poschodie
Family house - floor

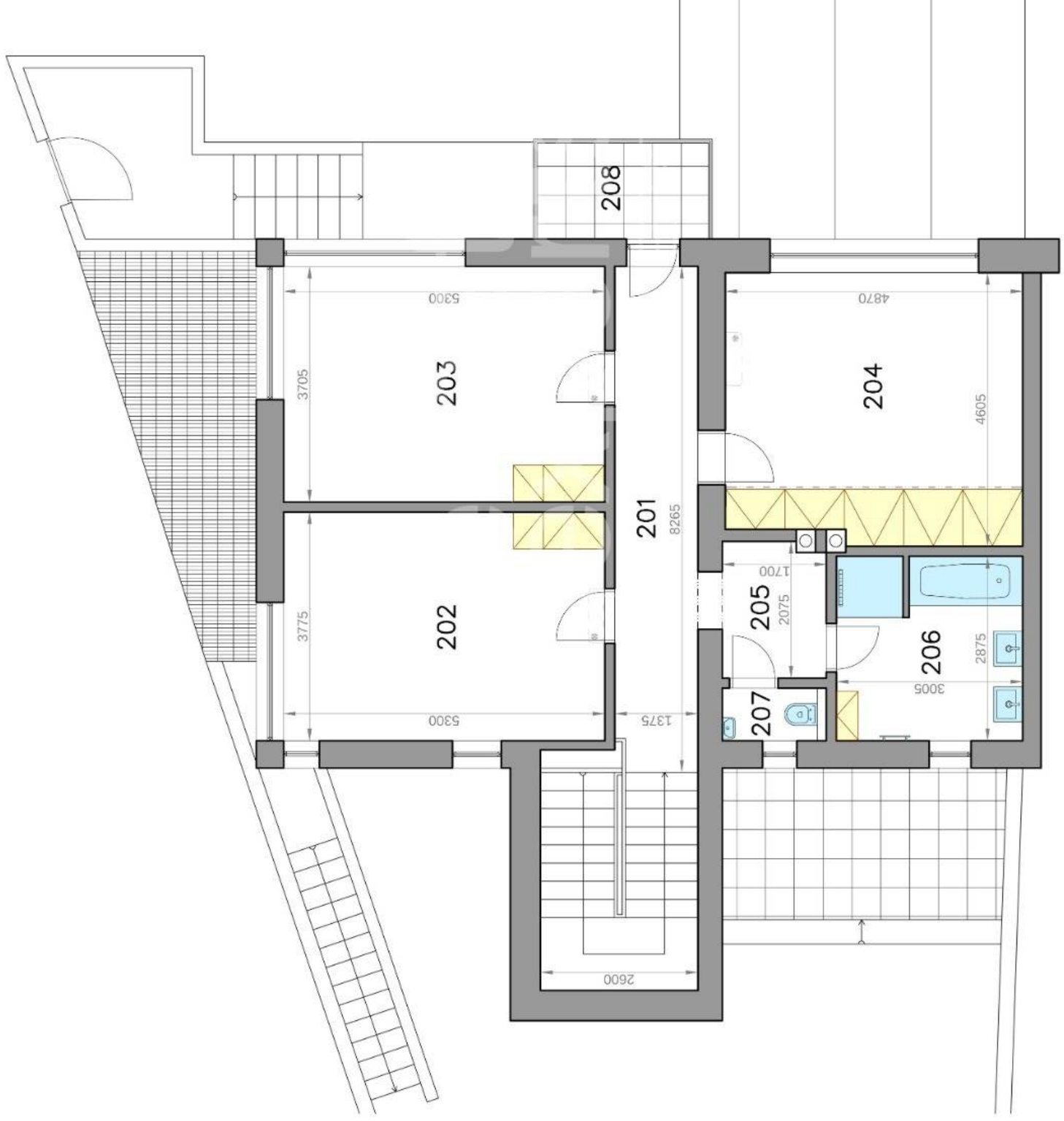
Bellova ulica
Bratislava III

LEGENDA MIESTNOSTÍ/LEGEND OF ROOMS

201	CHODBA/HALL	11,69 m ²
202	IZBA/ROOM	20,01 m ²
203	IZBA/ROOM	19,64 m ²
204	IZBA/ROOM	21,96 m ²
205	ŠATNÍK/WARDROBE	3,43 m ²
206	KÚPEĽŇA/BATHROOM	8,55 m ²
207	TOALETA/TOILET	1,27 m ²
PLOCHA CELKOM/TOTAL AREA		86,55 m²
208	BALKÓN/BALCONY	4,05 m ²



Výmery majú iba informatívny charakter
© Expat Experts / Ing. Miroslav Strelec



Rodinný dom - suterén
Family house - basement

Bellova ulica
Bratislava III

LEGENDA MIESTNOSTÍ/LEGEND OF ROOMS

001 SCHODISKO/STAIRWAY 9,78 m²

002 TECH. MIESTNOSŤ/TECH. ROOM 16,48 m²

003 KOMORA/PANTRY 4,30 m²

PLOCHA CELKOM/TOTAL AREA 30,56 m²

004 DVOJGARÁŽ/DOUBLE GARAGE 47,89 m²

005 VJAZD/SLIP ROAD 37,56 m²



Výmery majú iba informatívny charakter
© Expat Experts / Ing. Miroslav Strelec

