



Sunny 2 bdr apt 100 m², with a terrace in a residential complex

Bratislava I - Staré Mesto - Kráľovské údolie

FOR RENT

1 150 €/Month
+ utilities 350 €

Property ID: 446023

Condition

New building: yes

Furnishing: furnished

Size

Number of rooms: 3

Usable area: 100 m²

Total area: 136 m²

Floor

1. of 3 floors

Floor: raised ground floor

Elevator: yes

Parking

private

Property equipment

Bathroom: 1x, bath

Terrace: 36.00 m²

Utility room: 15.00 m²

+421 903 526 220

office@expat.sk



add this contact to
your mobile

Property description

Sunny 2 bdr apt 100 m², with a terrace in a residential complex

Disposition:

total area 100 m² + 36,40 m² terrace, situated on the elevated ground floor (3) in the newly built building with elevator.

Spacious entrance hall, living room with dining area, separated equipped kitchen, bedroom with king size bed, office/guest room, bathroom with bath, toilet and bidet.

Equipment:

The apartment is air-conditioned, rented furnished and equipped with electrical appliances, exterior blinds, security system.

Location:

Apartment is located in the Old town with complete collection of amenities (grocery stores, shops, bars, restaurants, banks, schools, healthcare and more), great traffic accessibility and lot of greenery.

Price and additional info:

Price does not include utilities (350€).

+ real estate commission.

To the apartment belongs a cellar (15 m²) and one parking space in the underground garage.

Available immediately.

We are looking forward to seeing you at the viewing!

@pleasant location

@generous square footage



Link to property

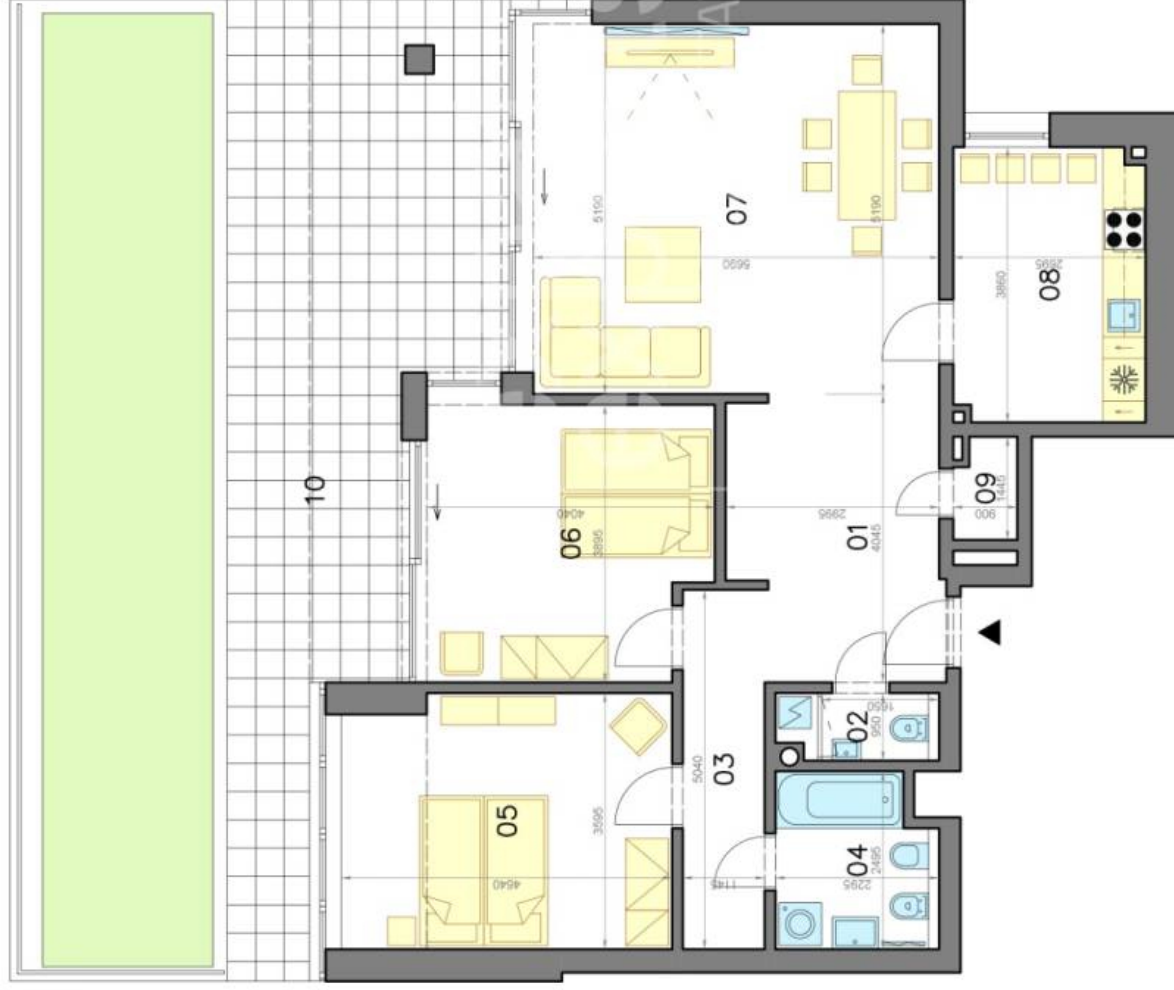


Video

3-izbový byt

2 bedroom apartment

Kráľovské údolie
Bratislava I



LEGENDA MIESTNOSTÍ/LEGEND OF ROOMS	
01	PREDSEŇ/HALL 11,53 m ²
02	TOALETA/TOILET 2,20 m ²
03	CHODBA/HALLWAY 5,78 m ²
04	KÚPEĽNA/BATHROOM 5,40 m ²
05	IZBA/ROOM 16,31 m ²
06	IZBA/ROOM 14,90 m ²
07	OBÝVACIA IZBA/LIVING ROOM 29,64 m ²
08	KUCHYŇA/KITCHEN 10,27 m ²
09	SKLAD/STORAGE 1,20 m ²

PLOCHA CELKOM/TOTAL AREA	97,23 m ²
10 TERASA/TERRACE	36,40 m ²



Výmery majú iba informatívny charakter.
© Expat Experts / Martin Bumbál