



Amazing, high standard 3bdr apt, 116m², 2x parking, view, Première
Bratislava I - Staré Mesto - Šancová - PREMIÉRE

FOR RENT

1 100 €/Month
+ parking and utilities

Property ID: 615717

Condition

New building: yes
Furnishing: unfurnished

Size

Number of rooms: 4
Usable area: 116 m²
Total area: 146 m²

Floor

21.

Elevator: yes

Parking

yes

Garage: 2 cars

Property equipment

Bathroom: 2x, bath and shower
Terrace: 29.00 m²
Air condition: yes

+421 903 526 220
office@expat.sk



add this contact to
your mobile

Property description

Amazing, high standard 3bdr apt, 116m², 2x parking, view, Première

Disposition:

total area 116m² + terrace 29,36m²; situated on the 21st floor in the newly built building with elevator; Entrance hall, separated WC, spacious living room connected to fully equipped kitchen with pult and terrace entrance, bathroom with bath and 2x sink, master bedroom with own bathroom (shower and WC), 2x bedroom.

Equipment:

Apartment will be rented unfurnished; A/C unit in each room; fully equipped kitchen with appliances; perfect disposition.

To the apartment belongs cellar.

Location:

Situated in new project Première in great area of Old town; complete civic amenities – services, shops, grocery store, restaurants, close shopping mall Central, city center and train station by walk; great connection by public transport and car access.

24hour receptio/security; garden terrace on 6th floor for project residents.

For residents is also available children playground during evenings and weekends.

Price and additional info:

Price does not include utilities 310€.

Available 2x parking space (larger than usual sizes) – 75€/per space.

Apartment is suitable for demand client with family.

We look forward to see you on the viewing!



Link to property



Video

4-izbový byt

3 bedroom apartment

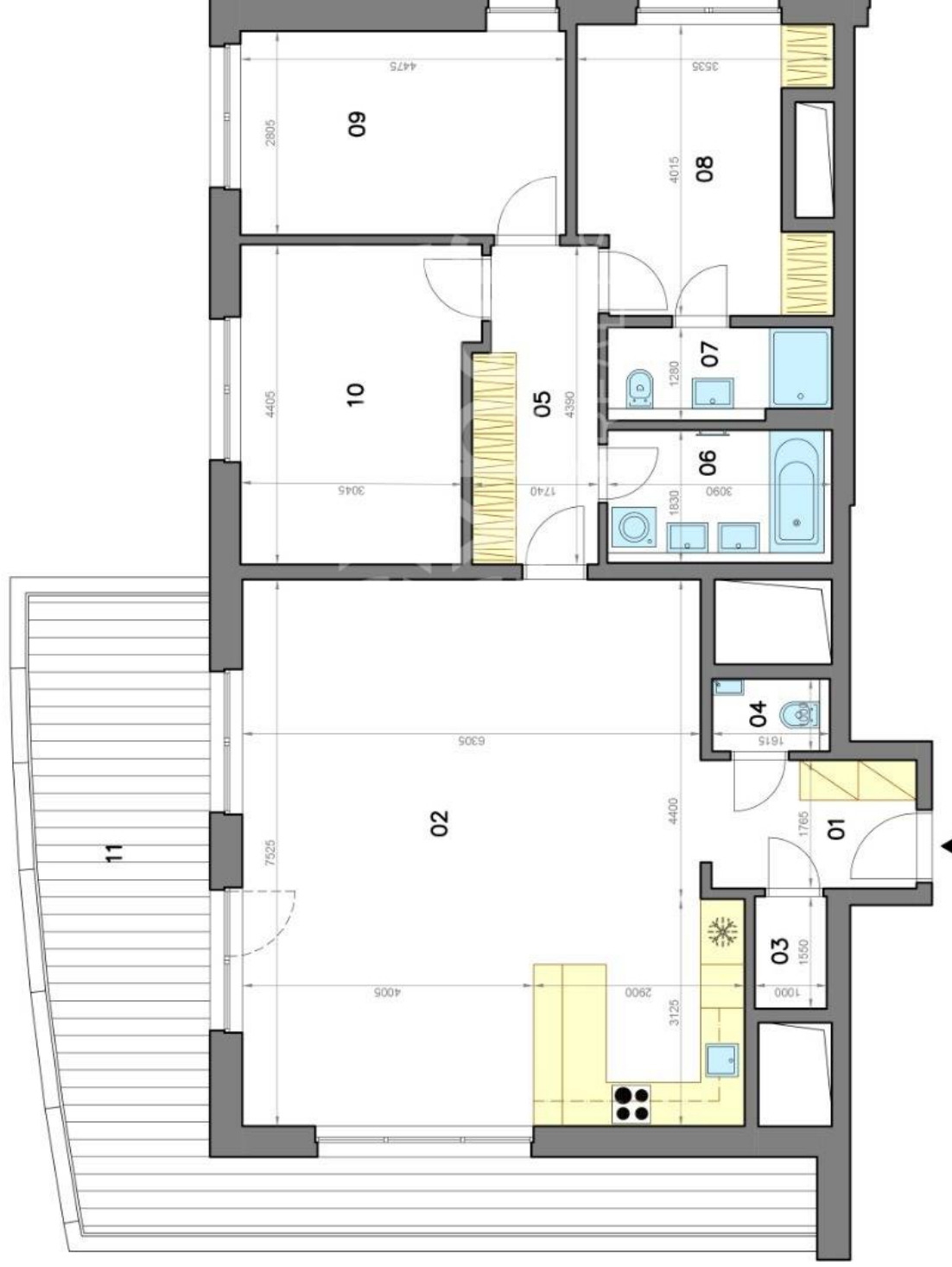
Šancová ulica

Bratislava I

LEGENDA MIESTNOSTÍ/LEGEND OF ROOMS

01	VSTUPNÁ HALA/ENTRY HALL	5,0 m ²
02	OBÝVACIA IZBA/LIVING ROOM	49,3 m ²
03	KOMORA/STORAGE ROOM	1,5 m ²
04	TOALETA/TOILET	1,6 m ²
05	CHODBA/HALLWAY	7,3 m ²
06	KÚPEĽNÁ/BATHROOM	5,7 m ²
07	KÚPEĽNÁ/BATHROOM	3,5 m ²
08	SPÁĽŇA/BEDROOM	12,3 m ²
09	IZBA/ROOM	12,5 m ²
10	IZBA/ROOM	14,5 m ²

PLOCHA	CELKOM/TOTAL AREA	116,0 m²
11	TERASA/TERRACE	29,0 m ²



Výmery majú iba informatívny charakter.

© Expat Experts / Tomáš Timko