



Two-story family house, 200 m², garden, garage, land 395 m²

Bratislava I - Staré Mesto - Na Kalvárii

FOR SALE

Price at broker

Property ID: 804391

Condition

Condition: original condition

Size

Number of rooms: 5

Usable area: 200 m²

Total area: 395 m²

Land area: 395 m²

Built up area: 159 m²

Floor

Number of floors: 2

Parking

Garage: 1 car

Property equipment

Bathroom: 1x, shower

Windows: wood

Balcony: yes

Heating: own - natural gas

Gas: yes



Ing. Zuzana Kanská

+421 903 455 954

kanska@expat.sk



add this contact to
your mobile

Property description

We offer exclusively for sale a two-story family house, partially basement, in its original condition with a garden and a garage for one car.

The family house is located in a sought-after location near by Horský park, in a safe and quiet environment, in a dead end street.

Disposition

On the ground floor there is an entrance hall, a room with a makeshift kitchen and space for a bathroom and separate room suitable as a study, studio or guest room, separate toilet.

On the first floor there is a kitchen, a spacious living room with a winter garden and an entrance to a terrace with a beautiful view of Bratislava, a separate bedroom and a small room suitable as a wardrobe, a bathroom with shower.

There are storage areas and a workshop in the basement of the house.

The house is connected to all utilities (sewage, water, gas, electricity).

There is a possibility to build a BBQ in the garden, from the garden there is an entrance to the garage (original condition).

The house is in its original condition with minor modifications: replaced wooden windows, newer kitchen unit, bathroom and toilet after reconstruction, refurbished interior doors, ceramic floor in the entrance hall.

According to the ÚPI (Territorial planning information), the possibility of building another second floor with a terrace.

We are looking forward to see you at the viewing!

More information: Ing. Zuzana Kanská, +421903455954, zuzana@expat.sk

@Kalvária @garage

@1 only here



Link to property



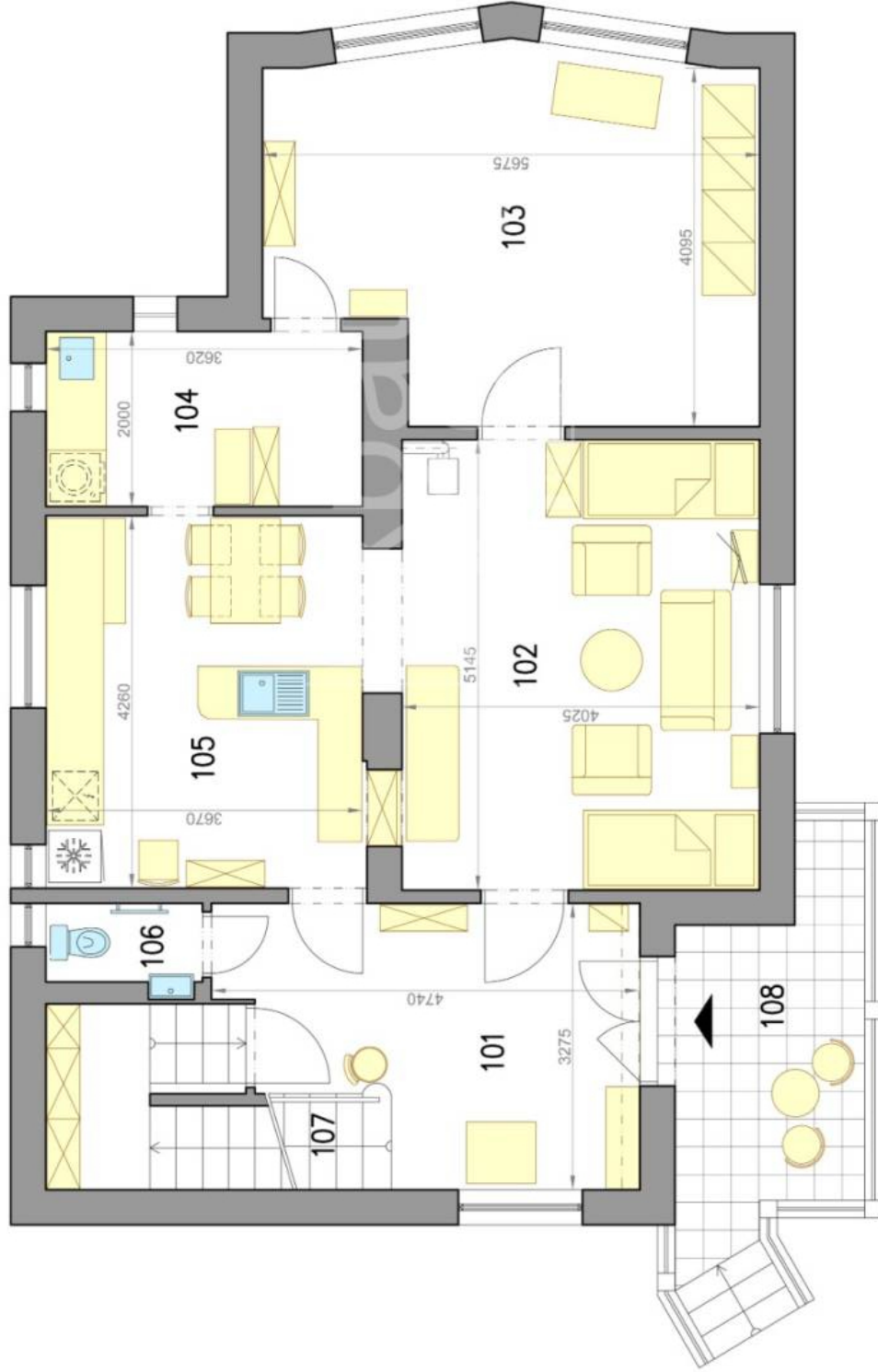
Video

Rodinný dom - prízemie
Family house - ground floor

ulica Na Kalvárii
Bratislava I

LEGENDA MIESTNOSTÍ/LEGEND OF ROOMS

101	VSTUPNÁ CHODBA/ENTRANCE HALL	13,25 m ²
102	OBÝVACIA IZBA/LIVING ROOM	21,60 m ²
103	IZBA/ROOM	22,10 m ²
104	KÚPEĽŇA/BATHROOM	7,24 m ²
105	KUCHYŇA/KITCHEN	16,00 m ²
106	TOALETA/TOILET	1,70 m ²
107	SCHODISKO/STAIRWAY	8,45 m ²
PLOCHA CELKOM/TOTAL AREA		90,34 m²
108	VSTUPNÁ TERASA/ENTRANCE TERRACE	8,80 m ²
109	GARAŽ/GARAGE	15,5 m ²

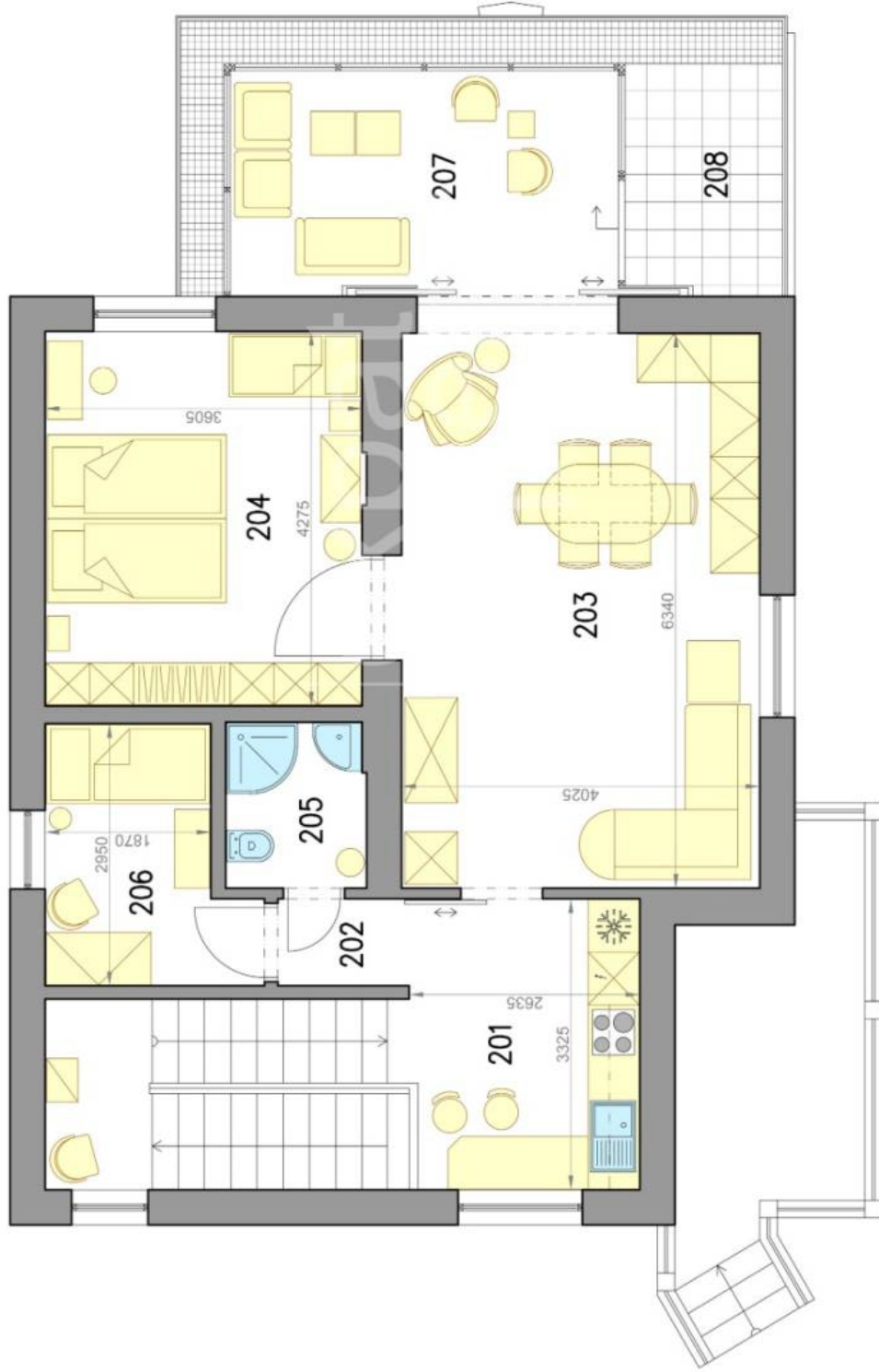


Rodinný dom - poschodie
Family house - floor

ulica Na Kalvárii
Bratislava I

LEGENDA MIESTNOSTÍ/LEGEND OF ROOMS

201 KUCHYŇA/KITCHEN	8,90 m ²
202 CHODBA/CORRIDOR	1,50 m ²
203 OBYVACIA IZBA/LIVING ROOM	26,50 m ²
204 SPÁĽŇA/BEDROOM	15,53 m ²
205 KÚPEĽŇA/BATHROOM	3,00 m ²
206 IZBA/ROOM	6,30 m ²
PLOCHA CELKOM/TOTAL AREA	61,73 m²
207 ZIMNÁ ZÁHRADA/WINTER GARDEN	11,40 m ²
208 TERASA/TERRACE	4,80 m ²



Rodinný dom - suterén
Family house - basement

ulica Na Kalvárii
Bratislava I

LEGENDA MIESTNOSTÍ/LEGEND OF ROOMS

001	SCHODISKO/STAIRWAY	5,90 m ²
002	SKLAD/STORAGE	14,40 m ²
003	SKLAD/STORAGE	14,30 m ²
004	TECH. MIESTNOSŤ/TECH. ROOM	6,78 m ²
005	DIELŇA/WORKROOM	16,45 m ²
006	DIELŇA/WORKROOM	25,32 m ²
PLOCHA CELKOM/TOTAL AREA		83,15 m²
007	SKLAD/STORAGE	4,00 m ²

