



Very nice 1 bdr apt 50 m², with loggia and parking, SKY PARK
Bratislava I - Staré Mesto - Čulenova - SKY PARK

FOR RENT

730 €/Month
+ utilities 370€

Property ID: 716743

Condition

Condition: original condition
New building: yes
Furnishing: furnished

Size

Number of rooms: 2
Usable area: 50 m²
Total area: 55 m²

Floor

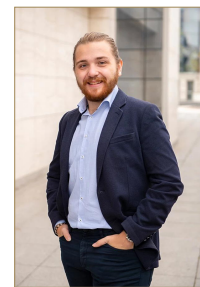
13. of 29 floors
Elevator: yes

Parking

yes

Property equipment

Bathroom: 1x, bath
Loggia: yes 5.00 m²



Martin Bumbál

+421 918 583 103
office@expat.sk



add this contact to
your mobile

Property description

Very nice 1 bdr apt 50 m², with loggia and parking, SKY PARK

Disposition:

Total area 55 m² including loggia; situated on the 13th floor (29) in the new building SKY PARK.

Entrance hall, spacious living room connected to a fully equipped kitchen and dining area, bedroom with a double bed and a view of the Old Town, bathroom with bathtub, separate toilet, loggia.

Equipment:

The apartment is rented fully furnished and equipped with appliances (fridge with freezer, electric oven, stove, hood). Trash elevator right from the apartment floor.

Paintings can be removed at the request of the future tenant.

Location:

Situated in unique project SKY PARK by Zaha Hadid – complete civic amenities: shops, restaurants, cafes, services; Slovak national theatre; shopping mall Eurovea & Nivy. The riverside promenade has numerous opportunities for sport activities.

Beautiful, green park with playground included in the project, 24/7 reception.

Perfect access by car and public transport either.

Price and additional info:

Price does not include utilities 370€ + **real estate agent commission**

It is possible to rent a garage parking space for an additional fee of 150€/month, it is not a condition of renting together with the apartment.

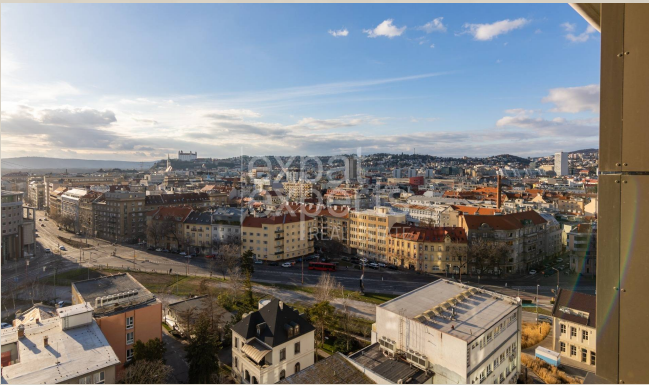
Available immediately.

We are looking forward to see you at the viewing!

@2 SKY PARK

@loggia

@parking



Link to property



Video

2-izbový byt
1-bedroom apartment

SKY PARK
Čulenova | Bratislava I

LEGENDA MIESTNOSTÍ / ROOMS LEGEND

| | | |
|-------------------------------|-----------------------------|---------------------------|
| 01 | CHODBA / HALL | 5,5 m ² |
| 02 | KÚPEĽŇA / BATHROOM | 4,5 m ² |
| 03 | KUCHYŇA / KITCHEN | 8,7 m ² |
| 04 | OBÝVACIA IZBA / LIVING ROOM | 16,9 m ² |
| 05 | SPÁĽŇA / BEDROOM | 12,5 m ² |
| 06 | TOALETA / TOILET | 1,9 m ² |
| ÚŽITKOVÁ PLOCHA / AREA | | 50,0 m² |

| | | |
|----------------------------------|-----------------|--------------------------|
| 07 | LODŽIA / LOGGIA | 4,8 m ² |
| PRÍSLUŠENSTVO / AMENITIES | | 4,8 m² |



CELKOVÁ PLOCHA / TOTAL **54,8 m²**

Výmery majú iba informatívny charakter
© Expat Experts / Ing. Miroslav Strelec

