



Unique, stylish 1bdr apt 60m², loggia, wardrobe, parking, SLNEČNICE
Bratislava V - Petržalka - Fialová - SLNEČNICE

FOR RENT

850 €/Month
+ utilities 200€

Property ID: 860114

Condition

New building: yes
Furnishing: furnished

Size

Number of rooms: 2
Usable area: 60 m²
Total area: 60 m²

Floor

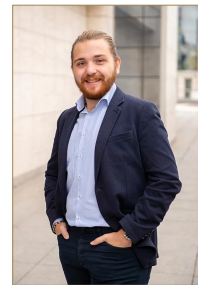
1. of 6 floors
Elevator: yes

Parking

yes

Property equipment

Bathroom: 1x, bath
Loggia: yes



Martin Bumbál

+421 918 583 103
office@expat.sk



add this contact to
your mobile

Property description

Unique, stylish 1bdr apt 60m², loggia, wardrobe, parking, SLNEČNICE

Disposition:

Total area 60m² + loggia; situated on the 1st floor (6) in the building with elevator;

Entrance hall, bathroom with bath, separated WC, walk in wardrobe, fully equipped kitchen connected to living room with dining table and loggia entrance, bedroom with king size bed and also entrance to loggia.

Equipment:

Fully and designly furnished and high standardly equipped; lot of storage spaces thanks to built in wardrobes in hallway and bedroom; maximum comfort; fully equipped kitchen with appliances; storage spaces in the bathroom.

Window interior blinds will be instaled.

Location:

Situated in favorite, modern project Slněčnice - UNIQ – complete civic amenities just few meters from apartment – restaurants, grocery store, apotheke, good connection by public transport and car, close is dike for sport activities and lakes, pleasant, green neighborhood.
Its located in smaller, more private building.

Price and additional info:

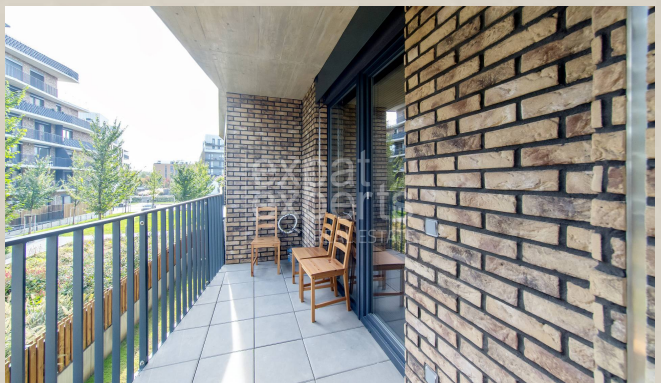
Price does not include utilities 200€ + **real estate agent commission**

Comes with private outdoor parking space.

Apartment is brand new, never rented before.

We are looking forward to see you at the viewing!

@2 SLNEČNICE
@ amazing design
@ppf



3D preview



Link to property



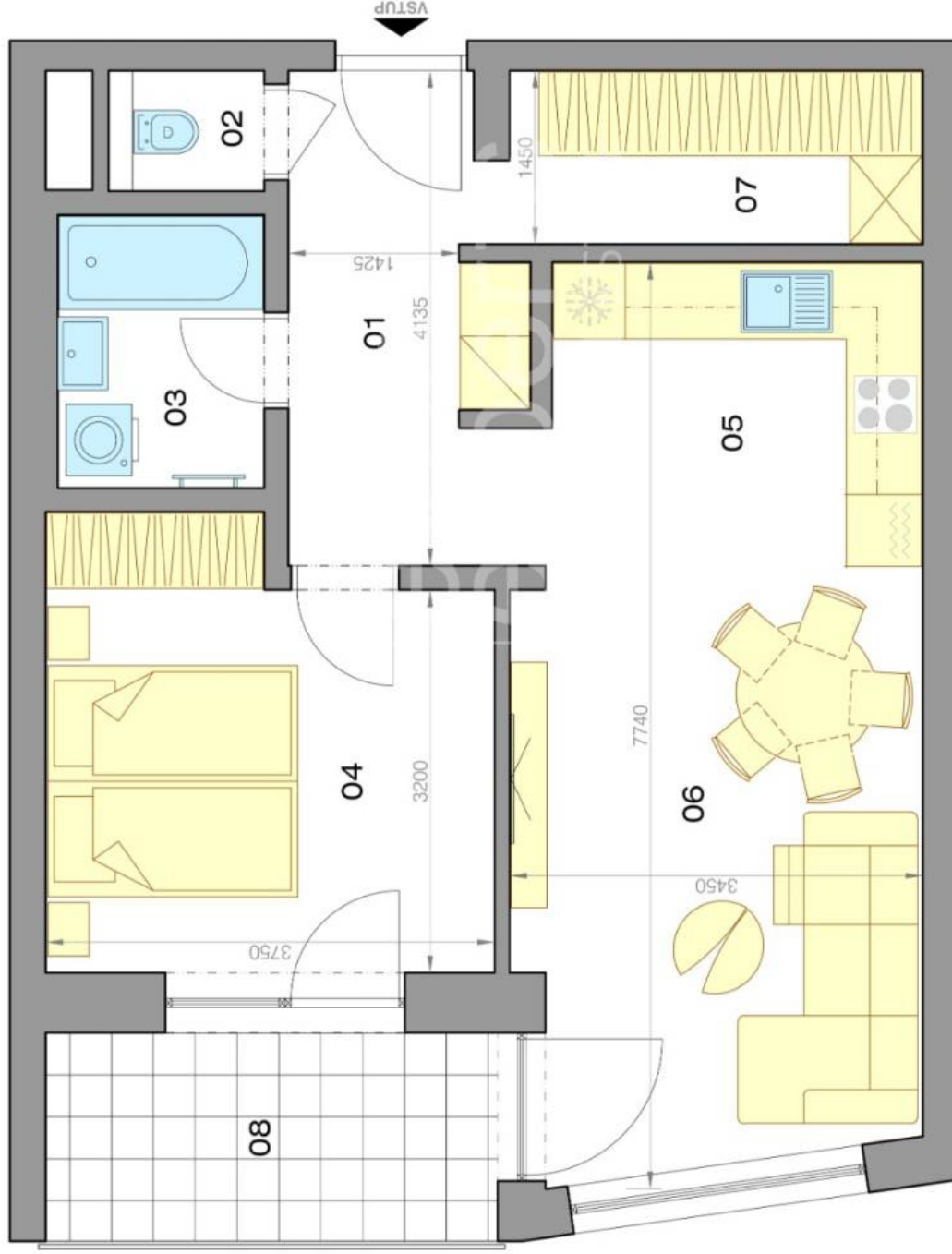
Video

2-izbový byt

1-bedroom apartment

SLNEČNICE

Fialová | Bratislava V



LEGENDA MIESTNOSTÍ / ROOMS LEGEND

01	CHODBA / HALL	8,0 m ²
02	TOALETA / TOILET	1,1 m ²
03	KÚPEĽŇA / BATHROOM	4,0 m ²
04	SPÁĽŇA / BEDROOM	13,6 m ²
05	KUCHYŇA / KITCHEN	8,5 m ²
06	OBÝVACIA IZBA / LIVING ROOM	16,0 m ²
07	ŠATNÍK / WARDROBE	5,5 m ²

ÚŽITKOVÁ PLOCHA / AREA **56,7 m²**

08 LODŽIA / LOGGIA 6,5 m²

PRÍSLUŠENSTVO / AMENITIES **6,5 m²**



CELKOVÁ PLOCHA / TOTAL **63,2 m²**

Výmery majú iba informatívny charakter

© Expat Experts / Ing. Miroslav Strelec