



Unique 6bdr family house 350m², with sauna, garden 800m² and parking
Bratislava III - Nové Mesto - Pezinská

FOR RENT

3 000 €/Month
+ utilities 400€

Property ID: 635141

Condition

Furnishing: furnished
Terrain: plain

Size

Number of rooms: 7
Usable area: 350 m²
Total area: 350 m²
Land area: 800 m²

Floor

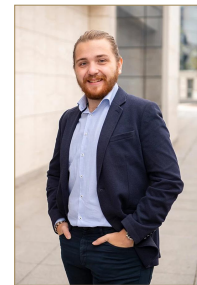
Number of floors: 2

Parking

yes
Garage: yes

Property equipment

Bathroom: 3x, bath and shower
Air condition: yes



Martin Bumbál

+421 918 583 103
office@expat.sk



add this contact to
your mobile

Property description

EXPAT EXPERTS | Unique 6bdr family house 350m², with sauna, A/C, garden 800m² and parking

Disposition:

total area 350m², land area 800m².

Entrance hall, spacious kitchen with dining area, dayroom, hobby room, 5x bedroom (master bedroom with own bathroom), winter garden, 3x bathroom, 4x toilet.

Equipment:

House is rented furnished, equipped with electrical appliances, cellar, offers lot of storage space.
Air condition, laundry room, sauna (dry and steam) with cooling pool.
Spacious garden suitable for swimming pool.

Location:

House is located in beautiful area close to vineyards and forest, perfect for relax and free time activities, sports, on the way to the house on the main road area all kind of restaurants, grocery stores, services. Good access by car, public transport, train station.

Because of it's spaciousness and location just 15 minutes from the city centre it is the best match for combination of housing and business.

Price and additional info:

Price does not include utilities 400€ + **real estate agent commission**

Covered parking for 5 cars, 2x parking in the garage, also 2x street parking.

Rent with pet is possible.

We are looking forward to see you at the viewing!

@pleasant location

@garden

@ppf



3D preview



Link to property



Video

7-izbový dom - suterén
6 bedroom house - ug
NOVÉ MESTO
Pezinská | BA III

LEGENDA MIESTNOSTÍ / ROOMS LEGEND	
-1.01 SCHODIŠTE/STAIRCASE	1,00 m ²
-1.02 CHODBA/HALLWAY	1,50 m ²
-1.03 KOTOLIŇA/BOILER ROOM	3,51 m ²
-1.04 TECHNICKÁ MIEST./TECH. ROOM	2,42 m ²
-1.05 SKLAD/STORAGE	3,99 m ²
-1.06 KÚPEĽNÁ/BATHROOM	18,99 m ²
-1.07 SAUNA/SAUNA	3,40 m ²
-1.08 CHODBA/HALLWAY	1,88 m ²
-1.09 SKLAD/STORAGE	24,53 m ²
-1.10 SCHODIŠTE/STAIRCASE	3,15 m ²
ÚŽITKOVÁ PLOCHA / AREA	64,37 m²

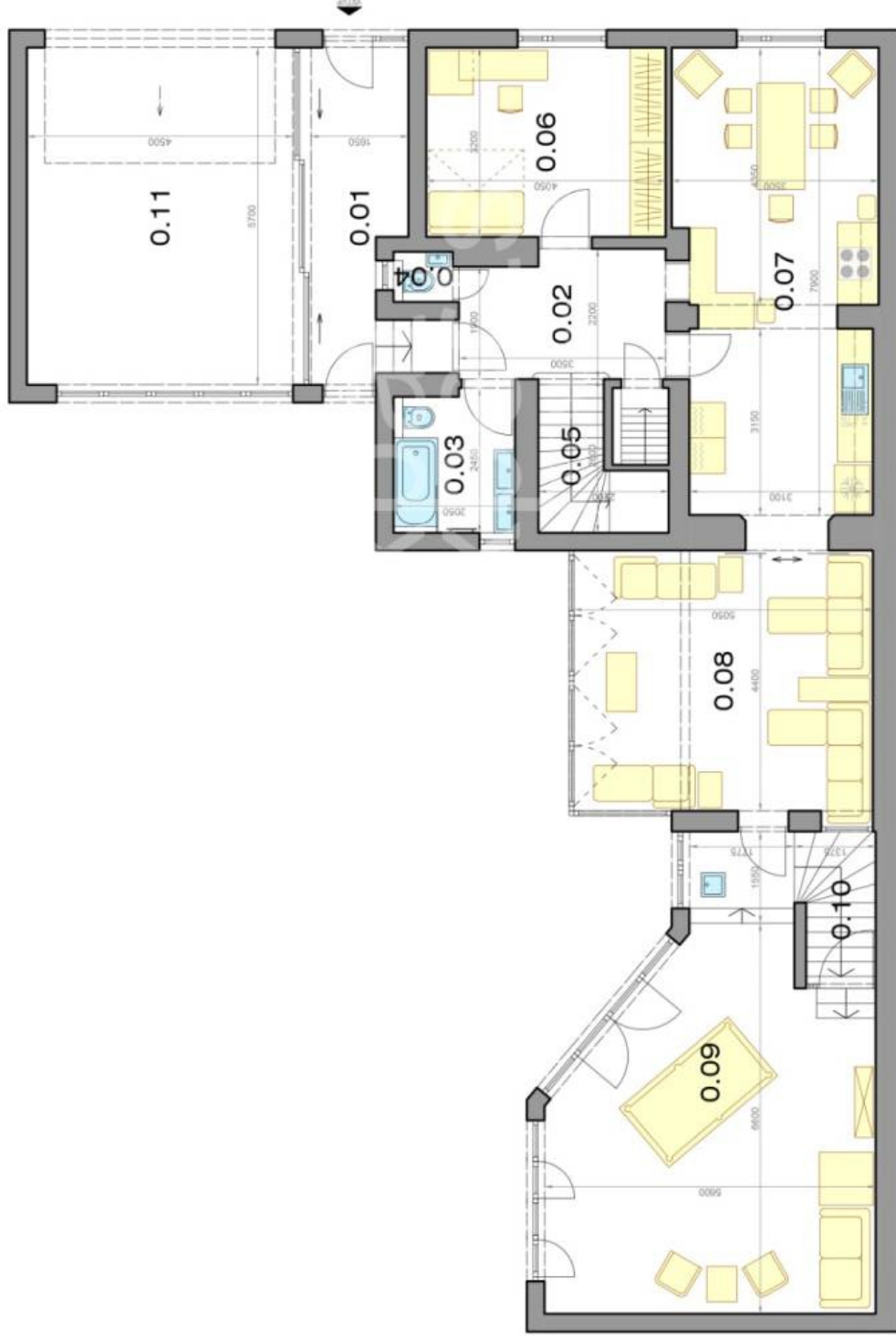


CELKOVÁ PLOCHA / TOTAL **64,37 m²**

Výmery majú iba informatívny charakter
© Expat Experts / Martin Bumbál



7-izbový dom - prizemie
6 bedroom house - gf
NOVÉ MESTO
Pezinská | BA III



LEGENDA MIESTNOSTÍ / ROOMS LEGEND

0.01 CHODBA/HALLWAY	8,03 m ²
0.02 PREDISIEŇ/HALL	7,30 m ²
0.03 KÚPEĽŇA/BATHROOM	4,75 m ²
0.04 TOALETA/TOILET	0,75 m ²
0.05 SCHODIŠTE/STAIRCASE	5,12 m ²
0.06 IZBA/ROOM	12,96 m ²
0.07 KUCHYŇA/KITCHEN	25,54 m ²
0.08 PÁTIO/PATIO	22,22 m ²
0.09 OBYVACIA IZBA/LIVING ROOM	34,20 m ²
0.10 SCHODIŠTE/STAIRCASE	4,24 m ²
ÚŽITKOVÁ PLOCHA / AREA	125,11 m²

0.11 GARÁŽ/GARAGE	25,65 m ²
PRÍSLUŠENSTVO / AMENITIES	25,65 m²



CELKOVÁ PLOCHA / TOTAL **150,76 m²**

Výmery majú iba informatívny charakter
© Expat Experts / Martin Bumbál

7-izbový dom - poschodie
6 bedroom house - 1st fl.
NOVÉ MESTO
Pezinská | BA III



LEGENDA MIESTNOSTÍ / ROOMS LEGEND

1.01 CHODBA/HALLWAY	2,60 m²
1.02 IZBA/ROOM	7,76 m²
1.03 IZBA/ROOM	13,65 m²
1.04 IZBA/ROOM	14,33 m²
1.05 IZBA/ROOM	10,54 m²
1.06 IZBA/ROOM	26,87 m²
1.07 KÚPEĽNÁ/BATHROOM	2,31 m²
1.08 TOALETA/TOILET	1,00 m²
ÚŽITKOVÁ PLOCHA / AREA	79,06 m²



CELKOVÁ PLOCHA / TOTAL **79,06 m²**

Výmery majú iba informatívny charakter
© Expat Experts / Martin Bumbál

