



Sunny business apartment 144m², with terrace with a view, to the office
Bratislava III - Nové Mesto - Elektrárenská

FOR RENT

10,50 €/m²/Month
(870 € / month)

Property ID: 780636

Condition

Condition: reconstructed

Size

Number of rooms: 1

Usable area: 83 m²

Total area: 83 m²

Floor

5. of 5 floors

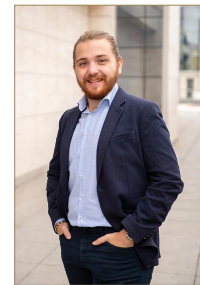
Parking

yes

+ services 3€ m²/month + 7,50€
/month terrace + 2,00€ m²/month
services + utilities according to real

Property equipment

Bathroom: 1x,



Martin Bumbál

+421 918 583 103

office@expat.sk



add this contact to
your mobile

Property description

Sunny, business apartment 144m², with terrace with a view, to the offices

Disposition:

Total area of 83m² + 61m²; situated on the 5th floor (5) in an office building;

Entrance hall, spacious room with kitchen and bathroom, terrace with view.

Equipment:

The apartment and the offices on the 5th floor have a higher standard - they have SMART remote and mobile control of heating, LED lighting, cooling, control of blinds.

The apartment is renovated; it is rented unfurnished - it will be finished according to the client's preferences.

It is rented together with office space:

There is another apartment on the same floor:

The apartment can also be rented separately as an OFFICE.

Location description:

The apartment is located in an excellent address with good access to the city center. Complete amenities - restaurants, cafes, shops, services, groceries.

Price and additional info:

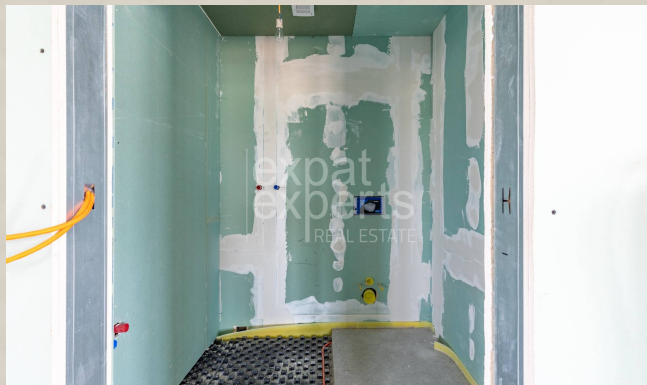
Price 10,50€ m² (83m²)/month + services 3€ m²/month + 7,50€ (61m²)/month terrace + 2,00€ m²/month services + utilities according to real consumption + **Real estate agency commission**

There are 2 to 3 parking spaces by agreement. The price for personal parking is 40€ per month and the price for van parking is 50€ per month.

We look forward to seeing you during the tour!

@employee apartment

@office



Link to property



Video

1-izbový byt

1 bedroom apartment

Elektrárnská ulica

Bratislava III

LEGENDA MIESTNOSTÍ/LEGEND OF ROOMS

01	VSTUPNÁ CHODBA/ENTRANCE HALL	13,2 m ²
02	SPÁLŇA/BEDROOM	21,1 m ²
03	OBÝVACIA IZBA/LIVING ROOM	33,0 m ²
04	KUCHYŇA/KITCHEN	10,0 m ²
05	TOALETA/TOILET	2,0 m ²
06	KÚPEĽŇA/BATHROOM	3,8 m ²
PLOCHA CELKOM/TOTAL AREA		83,1 m²
07	TERASA/TERRACE	61,0 m ²



Výmery majú iba informatívny charakter

© Expat Experts / Ing. Miroslav Strelec

