



Sunny 3 bdr house 250m², unfurnished, with terrace, garden and garage
Bratislava I - Staré Mesto - Hummelova

FOR RENT

3 500 €/Month
+ utilities 350€

Property ID: 472841

Condition

New building: yes
Furnishing: unfurnished

Size

Number of rooms: 4
Usable area: 250 m²
Total area: 400 m²
Land area: 400 m²
Built up area: 250 m²

Floor

Number of floors: 2

Parking

private
Garage: 2 cars

Property equipment

Air condition: yes
Fire place: yes

+421 903 526 220
office@expat.sk



add this contact to
your mobile

Property description

Sunny 3 bdr family house 250m², unfurnished, with terrace, garden and garage for 2 cars

Disposition:

total area 400 m²; the house has two floors.

Spacious living room with fireplace connected to fully equipped kitchen, 3 bedrooms, bathroom with shower and toilet, bathroom with bathtub and toilet.

Equipment:

The apartment is air conditioned, rented unfurnished and equipped with electrical appliances.

Location:

It is located in a pleasant area with good access to the city center. In the area, there is a complete collection of amenities (public transportation, schools, grocery stores, restaurants, bars).

Price and additional info:

Price does not include utilities (350€).

+ real estate commission.

To the house belongs terrace with garden, garage parking for 2 cars + outdoor parking space.

Available from 01.07.2024, viewings possible from june.

We are looking forward to seeing you at the viewing!

@we have the keys

@garage for 2 cars

@A/C



3D preview



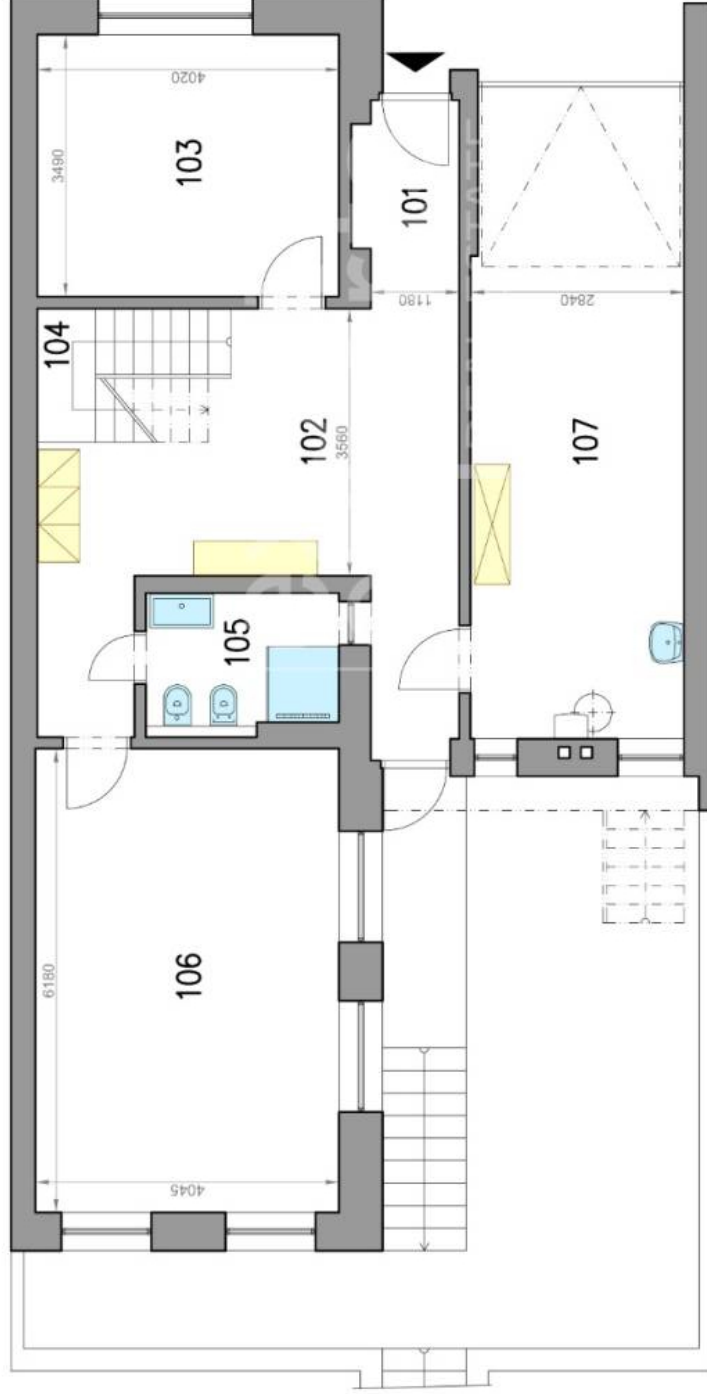
Link to property

Rodinný dom - prízemie
Family house - ground floor

Hummelova ulica
Bratislava I

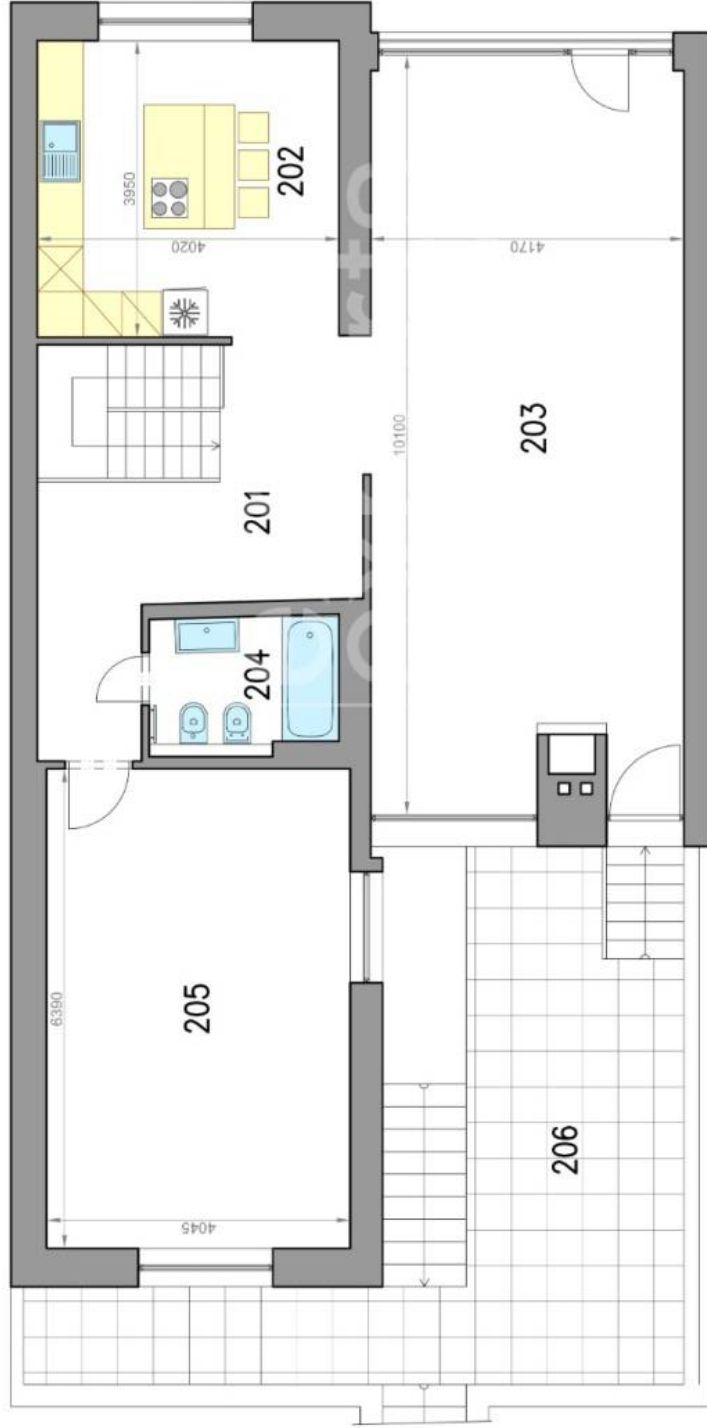
LEGENDA MIESTNOSTÍ/LEGEND OF ROOMS

101	VSTUPNÁ CHODBA/ENTRANCE HALL	3,7 m ²
102	CHODBA/HALL	25,7 m ²
103	IZBA/ROOM	14,0 m ²
104	SCHODISKO/STAIRWAY	4,3 m ²
105	KUPEĽŇA/BATHROOM	4,5 m ²
106	IZBA/ROOM	24,3 m ²
PLOCHA CELKOM/TOTAL AREA		76,5 m²
107	GARÁŽ/GARAGE	25,1 m ²



Rodinný dom - poschodie
Family house - floor

Hummelova ulica
Bratislava I



LEGENDA MIESTNOSTÍ/LEGEND OF ROOMS

201 CHODBA/HALL	14,3 m ²
202 KUCHYŇA/KITCHEN	15,7 m ²
203 OBÝVACIA IZBA/LIVING ROOM	42,8 m ²
204 KÚPEĽŇA/BATHROOM	4,5 m ²
205 IZBA/ROOM	24,7 m ²
PLOCHA CELKOM/TOTAL AREA	102,0 m²
206 TERASA/TERRACE	28,4 m ²

