



Spacious office space 120m<sup>2</sup> with parking in wanted location

Bratislava II - Ružinov - Dohnányho

**FOR RENT**

**10,00 €/m<sup>2</sup>/Month**  
( 1 200 € / month )

+ utilities

**Property ID: 781515**

**Condition**

**Furnishing:** furnished

**Size**

**Usable area:** 120 m<sup>2</sup>

**Total area:** 120 m<sup>2</sup>

**Floor**

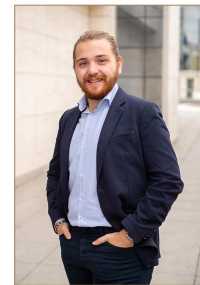
2. of 4 floors

**Elevator:** yes

**Parking**

private

**Property equipment**



**Martin Bumbál**

+421 918 583 103

office@expat.sk



add this contact to  
your mobile

## Property description

**Spacious office space 120m<sup>2</sup> with parking in wanted location**

### Disposition:

Total area 120 m<sup>2</sup>; situated on the 2nd floor (4) in the building with elevator;

### Equipment:

Apartment will be available unfurnished with equipment.

### Location:

Complete civic amenities and green parks in the neighborhood.  
Perfect access by public transport or by car.

### Price and additional info:

Price does not include utilities + **real estate agent commission**  
Possible to rent parking spots +70€ monthly per one spot.

**AVAILABLE immediately!**

**We are looking forward to see you at the viewing!**

@location

@spacious





Link to property



Video

**Kancelárske priestory - 2. posch.**  
**Office spaces - 2nd floor**

**Dohnányho ulica**

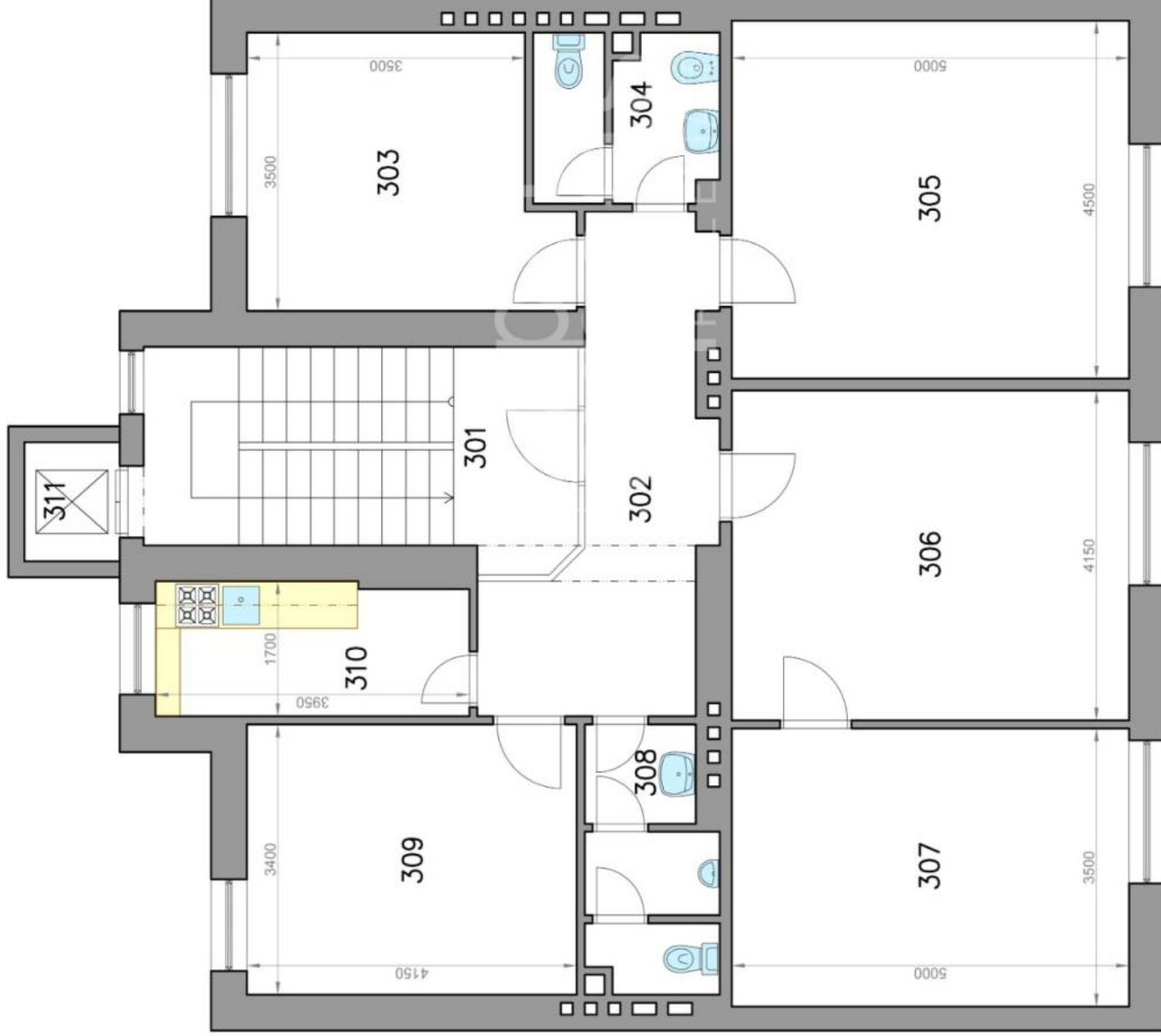
**Bratislava II**

**LEGENDA MIESTNOSTÍ/LEGEND OF ROOMS**

301	SCHODISKO/STAIRWAY	13,5 m <sup>2</sup>
302	CHODBA/HALL	11,2 m <sup>2</sup>
303	KANCELÁRIA/OFFICE ROOM	13,0 m <sup>2</sup>
304	TOALETA ŽENY/WOMEN'S TOILET	4,8 m <sup>2</sup>
305	KANCELÁRIA/OFFICE ROOM	22,5 m <sup>2</sup>
306	KANCELÁRIA/OFFICE ROOM	20,8 m <sup>2</sup>
307	KANCELÁRIA/OFFICE ROOM	17,5 m <sup>2</sup>
308	TOALETA MUŽI/MEN'S TOILET	4,9 m <sup>2</sup>
309	KANCELÁRIA/OFFICE ROOM	14,1 m <sup>2</sup>
310	KUCHYŇA/KITCHEN	6,5 m <sup>2</sup>
311	VÝŤAH/LIFT	1,5 m <sup>2</sup>
<b>PLOCHA CELKOM/TOTAL AREA</b>		<b>130,3 m<sup>2</sup></b>



Výmery majú iba informatívny charakter  
© Expat Experts / Ing. Miroslav Střelec



**Kancelárske priestory - suterén**  
**Office spaces - basement**

**Dohnányho ulica**  
**Bratislava II**

LEGENDA MIESTNOSTÍ/LEGEND OF ROOMS

001	CHODBA/HALL	13,3 m <sup>2</sup>
002	SCHODISKO/STAIRWAY	2,8 m <sup>2</sup>
003	SKLAD/STORAGE	2,8 m <sup>2</sup>
004	SKLAD/STORAGE	9,1 m <sup>2</sup>
005	PLYNOVÁ KOTOLŇA/GAS BOILET PLANT	17,8 m <sup>2</sup>
006	SKLAD/STORAGE	12,3 m <sup>2</sup>
007	MIESTNOSŤ/ROOM	6,6 m <sup>2</sup>
008	MIESTNOSŤ/ROOM	5,6 m <sup>2</sup>
009	SKLAD/STORAGE	22,0 m <sup>2</sup>
010	SKLAD/STORAGE	18,8 m <sup>2</sup>
<b>PLOCHA CELKOM/TOTAL AREA</b>		<b>111,1 m<sup>2</sup></b>



Výmery majú iba informatívny charakter  
© Expat Experts / Ing. Miroslav Strelec

