



Spacious office space 120m² with parking in wanted location

Bratislava II - Ružinov - Dohnányho

FOR RENT

10,00 €/m²/Month

(1 200 € / month)

+ utilities

Property ID: 781514

Condition

Furnishing: furnished

Size

Usable area: 120 m²

Total area: 120 m²

Floor

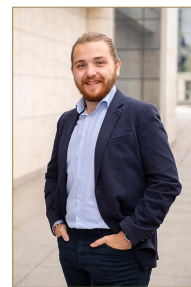
2. of 4 floors

Elevator: yes

Parking

private

Property equipment



Martin Bumbál

+421 918 583 103

office@expat.sk



add this contact to
your mobile

Property description

Spacious office space 120m² with parking in wanted location

Disposition:

Total area 120 m²; situated on the ground 2nd floor (4) in the building with elevator;

Equipment:

Apartment will be available unfurnished with equipment.

Location:

Complete civic amenities and green parks in the neighborhood.
Perfect access by public transport or by car.

Price and additional info:

Price does not include utilities + **real estate agent commission**
Possible to rent parking spots +70€ monthly per one spot.

AVAILABLE immediately!

We are looking forward to see you at the viewing!

@location

@spacious



Link to property



Video

Kancelárske priestory - prízemie
Office spaces - ground floor

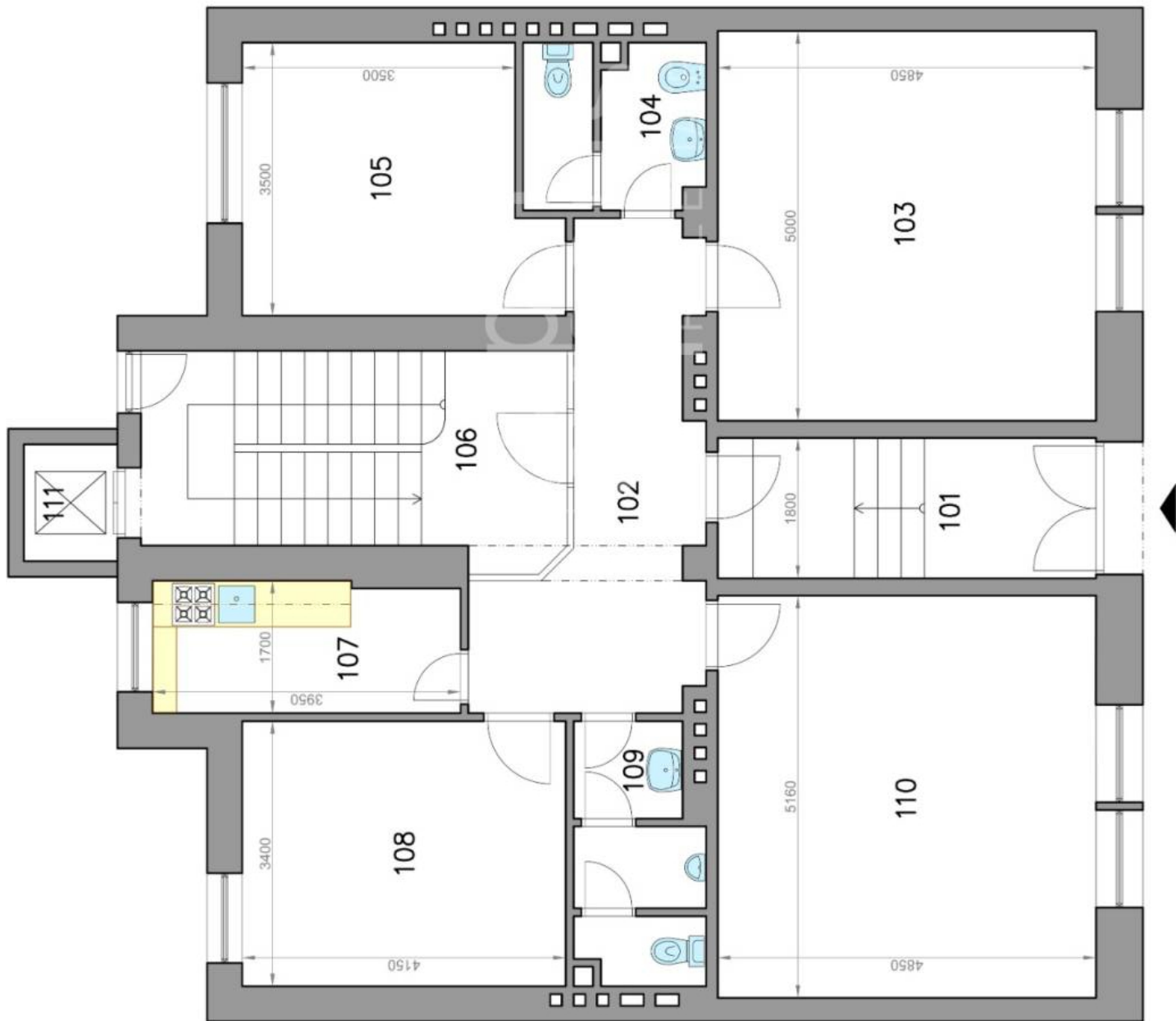
Dohnányho ulica
Bratislava II

LEGENDA MIESTNOSTÍ/LEGEND OF ROOMS

| | | |
|---------------------------------|------------------------------|----------------------------|
| 101 | VSTUPNÁ CHODBA/ENTRANCE HALL | 8,7 m ² |
| 102 | CHODBA/HALL | 10,3 m ² |
| 103 | KANCELÁRIA/OFFICE ROOM | 24,8 m ² |
| 104 | TOALETA ŽENY/WOMEN'S TOILET | 4,8 m ² |
| 105 | KANCELÁRIA/OFFICE ROOM | 13,0 m ² |
| 106 | SCHODISKO/STAIRWAY | 17,5 m ² |
| 107 | KUCHYŇA/KITCHEN | 6,5 m ² |
| 108 | KANCELÁRIA/OFFICE ROOM | 14,1 m ² |
| 109 | TOALETA MUŽI/MEN'S TOILET | 4,9 m ² |
| 110 | KANCELÁRIA/OFFICE ROOM | 25,0 m ² |
| 111 | VÝŤAH/LIFT | 1,5 m ² |
| PLOCHA CELKOM/TOTAL AREA | | 131,1 m² |



Výmery majú iba informatívny charakter
© Expat Experts / Ing. Miroslav Střelec



Kancelárske priestory - suterén
Office spaces - basement

Dohnányho ulica
Bratislava II

LEGENDA MIESTNOSTÍ/LEGEND OF ROOMS

| | | |
|---------------------------------|----------------------------------|----------------------------|
| 001 | CHODBA/HALL | 13,3 m ² |
| 002 | SCHODISKO/STAIRWAY | 2,8 m ² |
| 003 | SKLAD/STORAGE | 2,8 m ² |
| 004 | SKLAD/STORAGE | 9,1 m ² |
| 005 | PLYNOVÁ KOTOLŇA/GAS BOILET PLANT | 17,8 m ² |
| 006 | SKLAD/STORAGE | 12,3 m ² |
| 007 | MIESTNOSŤ/ROOM | 6,6 m ² |
| 008 | MIESTNOSŤ/ROOM | 5,6 m ² |
| 009 | SKLAD/STORAGE | 22,0 m ² |
| 010 | SKLAD/STORAGE | 18,8 m ² |
| PLOCHA CELKOM/TOTAL AREA | | 111,1 m² |



Výmery majú iba informatívny charakter
© Expat Experts / Ing. Miroslav Strelec

