

Spacious 5bdr house 259 m², unfurnished, fire place, terrace, garage

Bratislava III - Nové Mesto - Sovia

FOR RENT

2 500 €/Month
+ utilities 200€

Property ID: 646511

Condition

Furnishing: unfurnished

Terrain: slope

Access road: asphalt road

Building material: brick

Year of building approval: 2005

Size

Number of rooms: 6

Usable area: 259 m²

Total area: 334 m²

Floor

Number of floors: 2

Parking

private

Garage: 1 car

Property equipment

Bathroom: 2x, bath and shower

Windows: plastic

Balcony: yes - 25.60 m²

Terrace: 70.00 m²

Front garden: yes

Utility room: 24.00 m²

Fire place: yes

Internet connection: Phone line

Cable TV: yes

Heating: own - natural gas

Water: public water-supply

Electricity: 230V

Gas: yes

Sewerage: yes

Wheelchair access: yes



Mgr. Nina Strečková

+421 903 526 220

office@expat.sk



add this contact to
your mobile

Property description

Spacious modern 5bdr family house 236 m², unfurnished, fire place, garage

Disposition:

total area of house 310 m², situated on two floors.

Ground floor: Spacious living room with fireplace and gallery, connected to a fully equipped kitchen, with an entrance to a 45m² front terrace, 1 bedroom, separate toilet,

Upper floor: 4 x bedrooms, 2 x bathrooms (one accessible from the corridor on the gallery, the other accessible from the bedroom), rear terrace 25 m², 2 x balconies with an area of 2,6 m² each.

Equipment:

The house is rented unfurnished, the kitchen is equipped with built-in appliances, a pantry by the kitchen with shelves, built-in wardrobes in the bedrooms.

Underfloor heating, interior and exterior blinds, one of the upstairs rooms is air-conditioned.

Large warehouse with shelves. The garage is detached and there is parking on the property for another 2-3 cars.

The house is part of a semi-detached house, shared, landscaped garden.

Location:

House is situated in amazing neighborhood on Koliba in area which is not crowded and provides lot of privacy and quiet living, in the neighborhood are grocery stores, restaurants, lot of greenery, park Gaštanica, good access by car.

Price and additional info:

Price does not include utilities.

+ real estate commission.

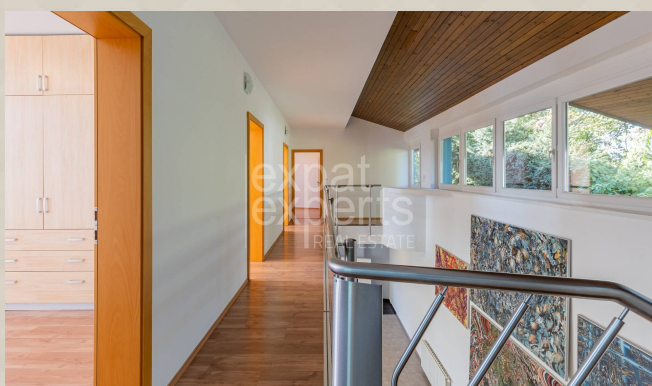
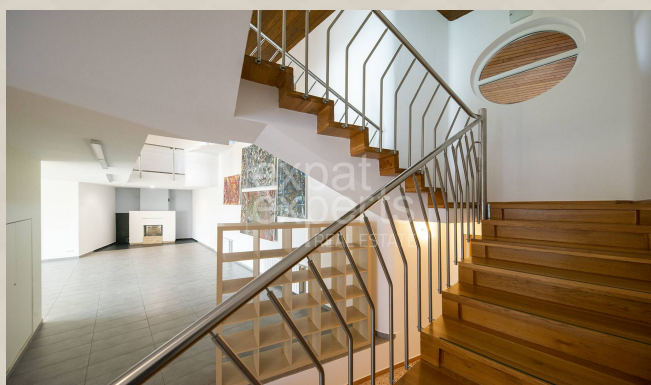
1x parking space in the garage + 2-3 parking spots on the property.

Tenants can use the tennis court, which is located directly on the property of the private complex.

Available immediately.

Photos will be updated soon.

We are looking forward to seeing you at the viewing!



Link to property



Video

Dom I (modrá) - prízemie
House I (blue) - ground floor

Koliba

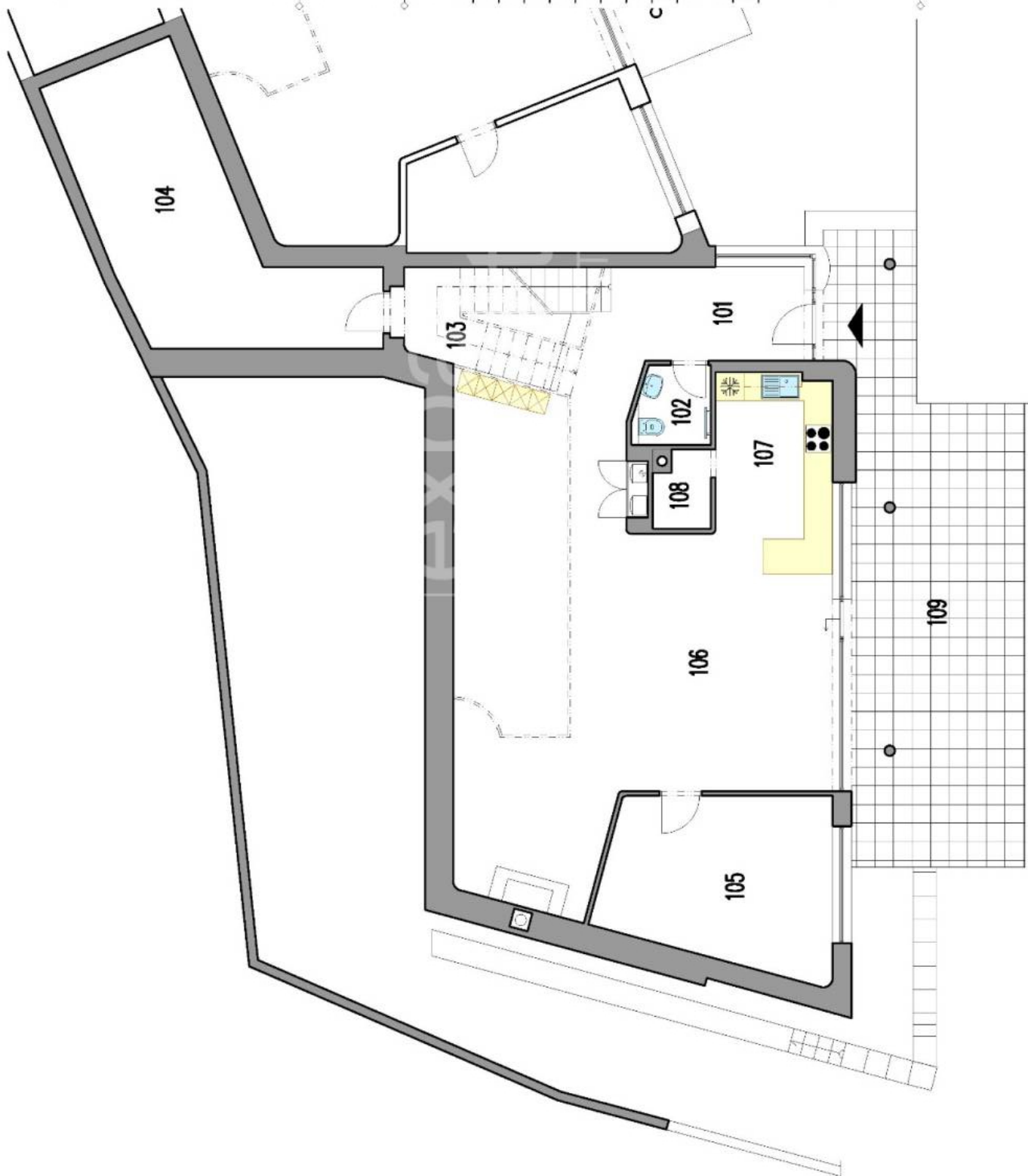
Bratislava III

LEGENDA MIESTNOSTÍ/LEGEND OF ROOMS

101	VSTUPNÁ CHODBA/ENTRANCE HALL	8,00 m ²
102	TOALETA/TOILET	2,50 m ²
103	PODŠCHODISKOVÝ PR./UNDERSTAIRS SPACE	8,00 m ²
104	SKLAD/STORAGE	23,60 m ²
105	PRACOVŇA/WORKROOM	17,50 m ²
106	OBYVACIA IZBA/LIVING ROOM	61,50 m ²
107	KUCHYŇA/KITCHEN	8,70 m ²
108	KOMORA/PANTRY	1,90 m ²
PLOCHA CELKOM/TOTAL AREA		131,70 m²
109	TERASA/TERRACE	45,00 m ²
110	GARÁŽ/GARAGE	22,70 m ²



Výmery majú iba informatívny charakter
© Expat Experts / Ing. Miroslav Strelec



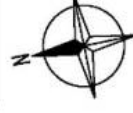
Dom I (modrá) - poschodie
House I (blue) - floor

Koliba

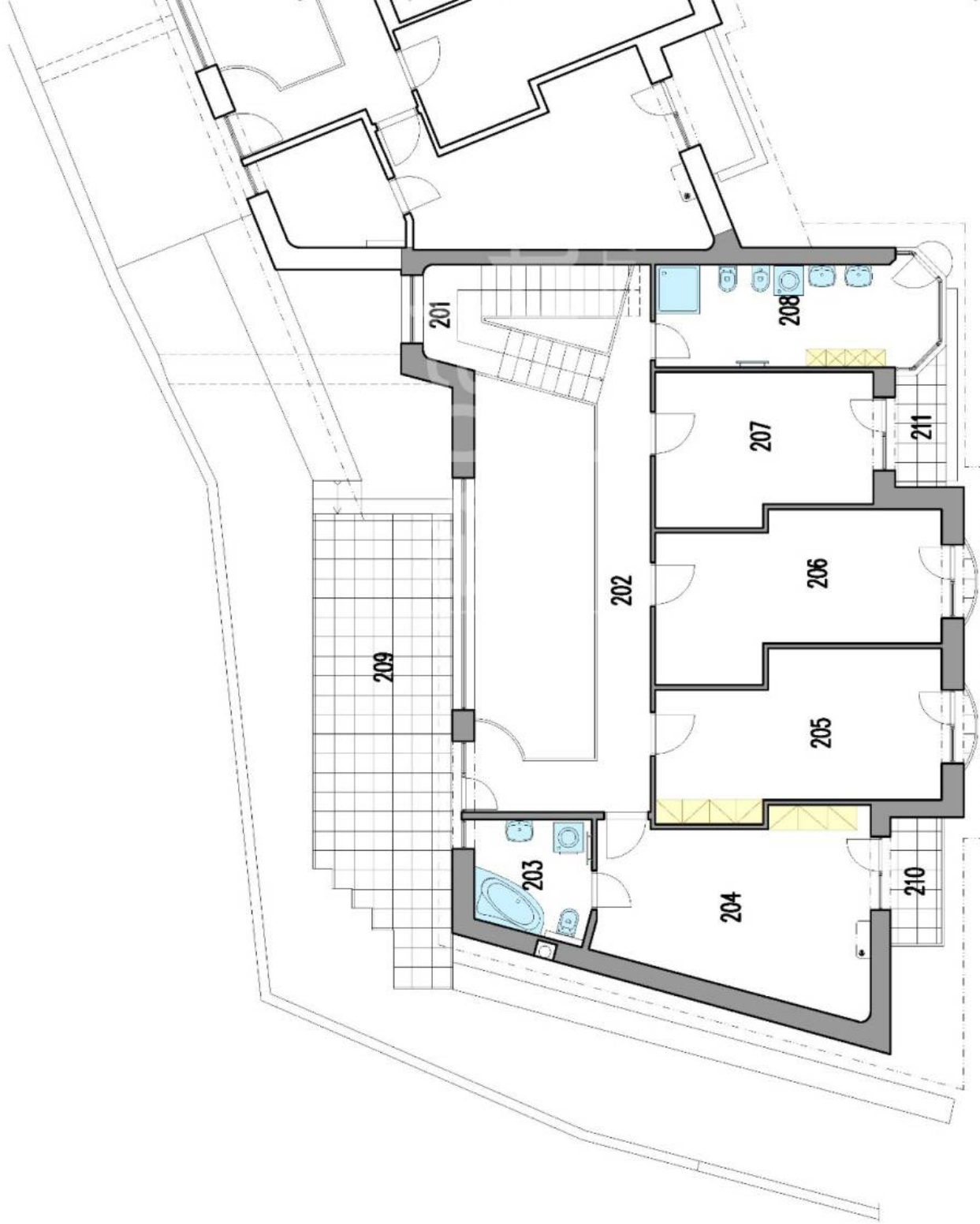
Bratislava III

LEGENDA MIESTNOSTÍ/LEGEND OF ROOMS

201	SCHODISKO/STAIRWAY	8,00 m ²
202	GALÉRIA/GALLERY	12,50 m ²
203	KÚPEĽŇA/BATHROOM	5,30 m ²
204	SPÁĽŇA/BEDROOM	19,60 m ²
205	IZBA/ROOM	17,60 m ²
206	IZBA/ROOM	17,60 m ²
207	IZBA/ROOM	13,20 m ²
208	KÚPEĽŇA/BATHROOM	11,00 m ²
PLOCHA CELKOM/TOTAL AREA		104,80 m²
209	TERASA/TERRACE	25,00 m ²
210	BALKÓN/BALCONY	2,80 m ²
211	BALKÓN/BALCONY	2,60 m ²



Výmery majú iba informatívny charakter
© Expat Experts / Ing. Miroslav Strelec



Rodinné domy - prízemie
Family houses - ground floor

Koliba

Bratislava III

LEGENDA MIESTNOSTÍ/LEGEND OF ROOMS

101 DOM I (MODRÁ)/HOUSE I (BLUE) 131,70 m²

102 DOM II (ORANŽOVÁ)/HOUSE II (ORANGE) 122,65 m²

PLOCHA CELKOM/TOTAL AREA 254,35 m²

103 GARÁŽ I (MODRÁ)/GARAGE I (BLUE) 22,70 m²

104 TERASA I (MODRÁ)/TERRACE I (BLUE) 40,50 m²

105 GARÁŽ II (ORANŽOVÁ)/GARAGE II (ORANGE) 21,00 m²

106 TERASA II (ORANŽOVÁ)/TERRACE II (ORANGE) 30,50 m²



Výmery majú iba informatívny charakter
© Expat Experts / Ing. Miroslav Strelec

