

RESERVED Spacious 2bdr apt 85m<sup>2</sup>, with loggia and 2x parking, PANORAMA  
Bratislava I - Staré Mesto - Landererova - PANORAMA TOWERS

FOR RENT

1 350 €/Month  
+ utilities 350€

Property ID: 536738

#### Condition

**New building:** yes  
**Furnishing:** furnished

#### Size

**Number of rooms:** 3  
**Usable area:** 85 m<sup>2</sup>  
**Total area:** 85 m<sup>2</sup>

#### Floor

27. of 33 floors

**Elevator:** yes

#### Parking

private

**Garage:** 1 car

#### Property equipment

**Bathroom:** 1x, bath  
**Loggia:** yes 6.90 m<sup>2</sup>  
**Internet connection:** optics



Mgr. Nina Strečková

+421 903 526 220  
office@expat.sk



add this contact to  
your mobile

## Property description

**Spacious 2bdr apt 85m<sup>2</sup>, with loggia and 2x parking, nice view, PANORAMA TOWERS**

### Disposition:

Total area 85,34 m<sup>2</sup>, situated on the 27th floor (33) in a new building with an elevator.

Entrance hall, living room with entrance to loggia (6,90 m<sup>2</sup>), fully equipped kitchen, bedroom, guest bedroom/office, bathroom with bathtub, separate toilet, cellar (4 m<sup>2</sup>).

### Equipment:

The apartment is rented fully furnished and equipped with electrical appliances.

### Location:

The apartment is situated in a modern building Panorama City located in a great area with all amenities nearby (shops, restaurants, cafes, theatre, shopping mall Centrál & Nivy) and quick accessibility to other parts of the city. The apartment is oriented to river Danube.

### Price and additional info:

Price does not include utilities (350€).

+ real estate commission.

24/7 reception in the building.

To the apartment belongs 2x parking space and a cellar (4 m<sup>2</sup>), each parking space is for 150€ per month.

Available from 01.07.2024, viewings possible.

**We are looking forward to seeing you at the viewing!**

@2 PANORAMA TOWERS

@2x parking

@1 reserved





Link to property



Video

**3-izbový byt**

**2 bedroom apartment**

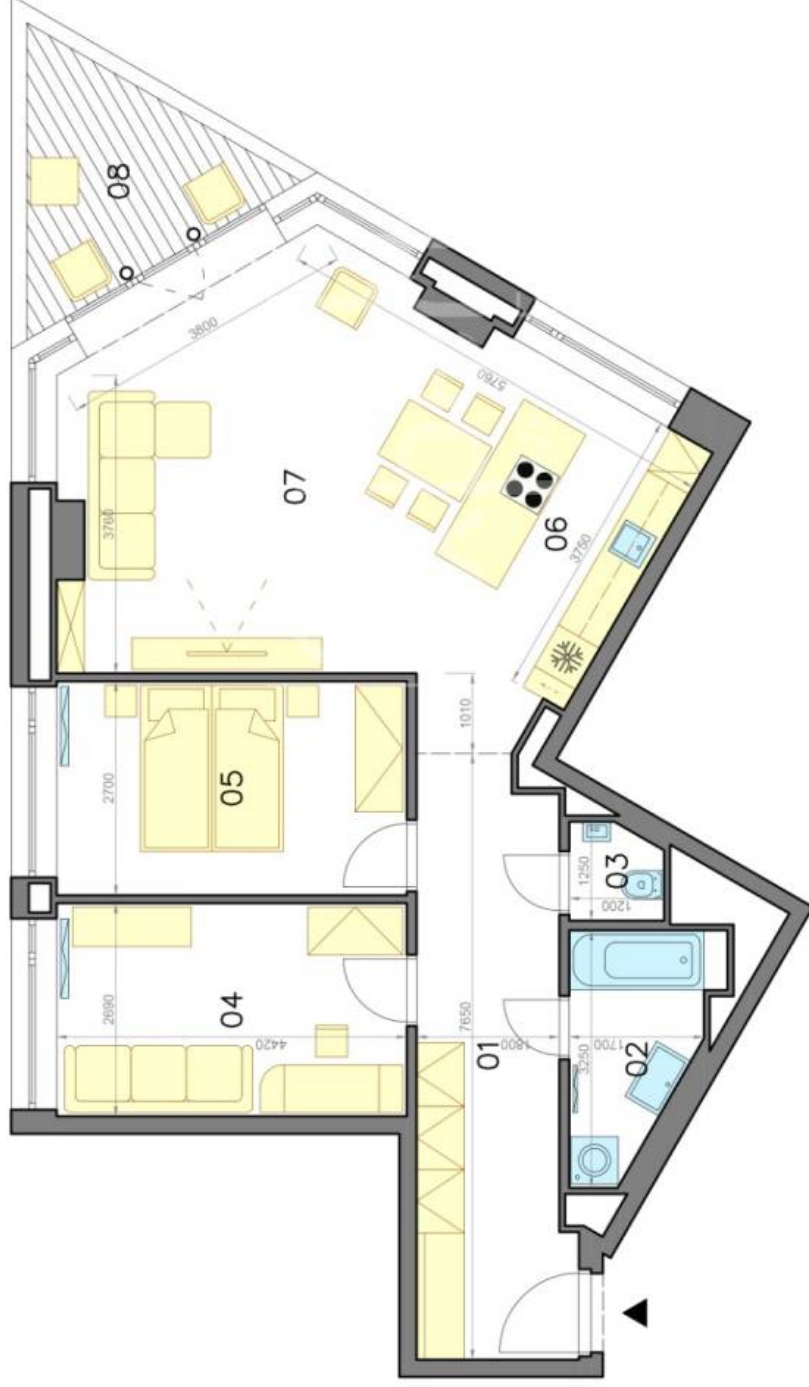
**Landererova ulica  
Bratislava I**

**LEGENDA MIESTNOSTÍ/LEGEND OF ROOMS**

01	PREDSIEN'/HALL	13,62 m <sup>2</sup>
02	KÚPEĽNÁ/BATHROOM	4,49 m <sup>2</sup>
03	TOALETA/TOILET	1,42 m <sup>2</sup>
04	IZBA/ROOM	12,15 m <sup>2</sup>
05	SPÁLŇA/BEDROOM	12,19 m <sup>2</sup>
06	KUCHYŇA/KITCHEN	8,17 m <sup>2</sup>
07	OBÝVACIA IZBA/LIVING ROOM	29,30 m <sup>2</sup>

**PLOCHA CELKOM/TOTAL AREA 81,34 m<sup>2</sup>**

**08 LODŽIA/LOGGIA 6,90 m<sup>2</sup>**



Výmery majú iba informatívny charakter.

© Expat Experts / Martin Bumbál