



Office spaces 92m<sup>2</sup> in the city center, parking  
Bratislava I - Staré Mesto - Fraňa Kráľa

**FOR RENT**

**10,50 €/m<sup>2</sup>/Month**  
( 960 € / month )

+ utilities 2,9€/m<sup>2</sup>/monthly

**Property ID: 446784**

**Condition**

**Condition:** fully re-made

**Size**

**Number of rooms:** 4

**Usable area:** 92 m<sup>2</sup>

**Total area:** 92 m<sup>2</sup>

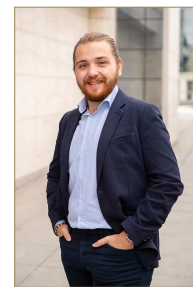
**Floor**

**Number of floors:** 4

**Floor:** basement

**Property equipment**

**Air condition:** yes



**Martin Bumbál**

+421 918 583 103

office@expat.sk



add this contact to  
your mobile

## Property description

**Office spaces 92m<sup>2</sup> in the city center, parking**

### Disposition:

Total area 92 m<sup>2</sup>; situated on the ground floor in an apartment building;

Entrance hall, 3x office rooms, 1x common room, womens and mens toilets, kitchen.

### Equipment:

In the Office space is located alarm, telephone line, structured cabling, carpets, tiles, blinds,.

### Location:

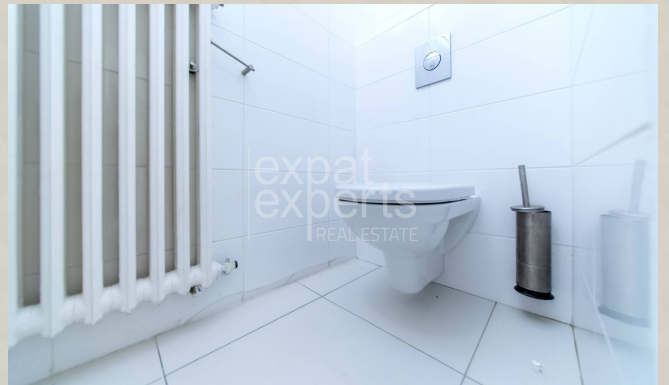
Apartment is located in the city center with complete collection of amenities (grocery stores, shops, bars, restaurants, banks, schools, healthcare...), great traffic accessibility and lot of greenery.

### Price and additional info:

Price 10,50€ /m<sup>2</sup>/month + 270€ utilities + **real estate agent commission**

Available 2 parking spaces for 50€/month fee for 1 space.

**We are looking forward to see you at the viewing!**



Link to property



Video



**Kancelárske priestory**  
**Office spaces**

**ulica Fraňa Kráľa**  
**Bratislava I**

**LEGENDA MIESTNOSTÍ/LEGEND OF ROOMS**

01	CHODBA/HALL	8,3 m <sup>2</sup>
02	KANCELÁRIA/OFFICE ROOM	23,1 m <sup>2</sup>
03	KANCELÁRIA/OFFICE ROOM	18,6 m <sup>2</sup>
04	KANCELÁRIA/OFFICE ROOM	21,7 m <sup>2</sup>
05	KUCHYŇA/KITCHEN	9,4 m <sup>2</sup>
06	TOALETA ŽENY/TOILET WOMAN	4,2 m <sup>2</sup>
07	TOALETA MUŽI/TOILET MEN	4,2 m <sup>2</sup>
08	UMÝVAREŇ/WASHROOM	2,0 m <sup>2</sup>
<b>PLOCHA CELKOM/TOTAL AREA</b>		<b>91,5 m<sup>2</sup></b>
09	ZÁDVERIE/ENTRANCE	7,7 m <sup>2</sup>
10	VSTUPNÁ CHODBA/ENTRANCE HALL	2,8 m <sup>2</sup>



Výmery majú iba informatívny charakter  
© Expat Experts / Ing. Miroslav Střelec

