



Modern sunny 3bdr apt 89m², with loggia and parking, PANORAMA TOWERS
Bratislava I - Staré Mesto - Landererova - PANORAMA TOWERS

FOR RENT

1 800 €/Month
+ utilities 400€

Property ID: 447506

Condition

New building: yes
Furnishing: furnished

Size

Number of rooms: 4
Usable area: 89 m²
Total area: 96 m²

Floor

26. of 33 floors

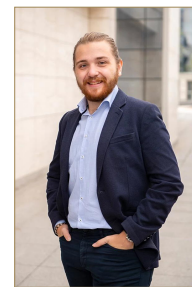
Elevator: yes

Parking

private
Garage: 1 car

Property equipment

Bathroom: 2x, bath and shower
Loggia: yes 7.00 m²
Air condition: yes



Martin Bumbál

+421 918 583 103
office@expat.sk



add this contact to
your mobile

Property description

Modern sunny 3bdr apt 89m², with loggia and parking, PANORAMA TOWERS

Disposition:

total area 89 m² + 7 m² loggia; situated on the 26th floor (33) in the building with an elevator.

Entrance hall, living room with entrance to the loggia connected to fully equipped kitchen (fridge with freezer, stove, oven, microwave oven, dishwasher) with dining area, master bedroom with private bathroom with shower and toilet, 2x bedroom, bathroom with bath and, separate toilet.

Equipment:

The apartment is air-conditioned, rented fully furnished and equipped with electrical appliances.

Location:

The apartment is situated in a modern building Panorama City located in a great area with all amenities nearby; shops, restaurants, cafes, shopping mall Nivy & Eurovea, Slovak National Theatre and quick accessibility to other parts of the city. The riverside promenade has numerous opportunities for sport activities.

Price and additional info:

Price does not include utilities 400€ + **real estate agent commission**

Internet connection and TV is not included in the price.

To the apartment belongs parking space in the garage.

Available from 15.11.2024, viewings possible upon agreement.

We are looking forward to see you at the viewing!

@2 PANORAMA TOWERS

@parking

@loggia



Link to property



Video

4-izbový byt

3-bedroom apartment

PANORAMA

Landererova | BA I



LEGENDA MIESTNOSTÍ / ROOMS LEGEND

01	CHODBA / HALL	11,4 m ²
02	KÚPEĽŇA / BATHROOM	5,0 m ²
03	IZBA / ROOM	12,9 m ²
04	KUCHYŇA / KITCHEN	6,5 m ²
05	OBÝVACIA IZBA / LIVING ROOM	25,2 m ²
06	IZBA / ROOM	9,5 m ²
07	SPÁĽŇA / BEDROOM	14,4 m ²
08	KÚPEĽŇA / BATHROOM	2,9 m ²
09	TOALETA / TOILET	1,7 m ²

ÚŽITKOVÁ PLOCHA / AREA **89,5 m²**

10 LODŽIA / LOGGIA 6,9 m²

PRÍSLUŠENSTVO / AMENITIES **6,9 m²**



CELKOVÁ PLOCHA / TOTAL **96,4 m²**

Výmery majú iba informatívny charakter

© Expat Experts / Ing. Miroslav Strelec