



RESERVED Luxury 2 bdr apt 89m<sup>2</sup>, A/C, loggia, terrace, EUROVEA  
Bratislava II - Ružinov - Pribinova - EUROVEA

FOR RENT

1 950 €/Month  
+ 250€ utilities

Property ID: 828958

Condition

**New building:** yes  
**Furnishing:** furnished

Size

**Number of rooms:** 3  
**Usable area:** 89 m<sup>2</sup>  
**Total area:** 102 m<sup>2</sup>

Floor

3. of 6 floors  
**Elevator:** yes

Parking

private

Property equipment

**Bathroom:** 1x, shower  
**Loggia:** yes 6.00 m<sup>2</sup>  
**Terrace:** 8.00 m<sup>2</sup>  
**Air condition:** yes  
**Internet connection:** wifi  
**Cable TV:** yes

+421 903 526 220  
office@expat.sk



add this contact to  
your mobile

## Property description

**Luxury 2 bdr apt 89m<sup>2</sup>, A/C, loggia, terrace, 2x parking, EUROVEA**

### Disposition:

Total area 88,56 m<sup>2</sup> + loggia 5,54 m<sup>2</sup> + terrace 7,89 m<sup>2</sup>; situated on the 3rd floor (6) in the building with elevator; Entrance hall, fully equipped kitchen and living room, master bedroom with king size bed, the second room, bathroom with a shower corner and separated WC

### Equipment:

Apartment will be available fully furnished with equipment and air condition.

### Location:

Complete civic amenities and green parks in the neighborhood.  
Perfect access by public transport or by car.

### Price and additional info:

Price does not include utilities 250€ + **real estate agent commission**

To the apartment belongs 2x parking.

**AVAILABLE immediately!**

**We are looking forward to see you at the viewing!**

@2xparking @air-condition

@2 EUROVEA

@1 reserved



Link to property



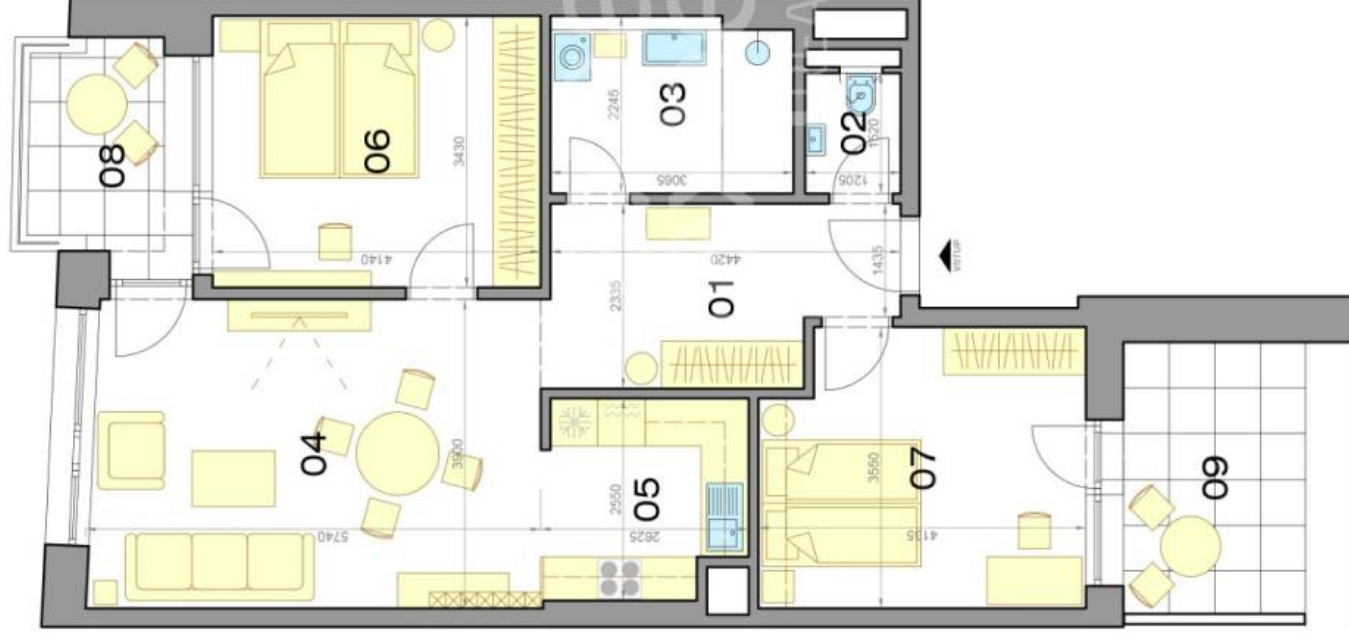
Video

**3-izbový byt**

**2 bedroom apartment**

**EUROVEA**

**Pribinova | BA II**



**LEGENDA MIESTNOSTÍ / ROOMS LEGEND**

01 PREDSIENĽ/HALL	9,36 m <sup>2</sup>
02 TOALETA/TOILET	1,83 m <sup>2</sup>
03 KÚPEĽNÁ/BATHROOM	6,88 m <sup>2</sup>
04 OBÝVACIA IZBA/LIVING ROOM	22,18 m <sup>2</sup>
05 KUCHYŇA/KITCHEN	6,45 m <sup>2</sup>
06 SPÁĽŇA/BEDROOM	14,38 m <sup>2</sup>
07 SPÁĽŇA/BEDROOM	14,04 m <sup>2</sup>
<b>ÚŽITKOVÁ PLOCHA / AREA</b>	<b>75,13 m<sup>2</sup></b>

08 LODŽIA/LOGGIA	5,54 m <sup>2</sup>
09 TERASA/TERRACE	7,89 m <sup>2</sup>
<b>PRÍSLUŠENSTVO / AMENITIES</b>	<b>13,43 m<sup>2</sup></b>



**CELKOVÁ PLOCHA / TOTAL 88,55 m<sup>2</sup>**

Výmery majú iba informatívny charakter  
© Expat Experts / Martin Bumbál