

## High standard 6 bdr apt, 440 m<sup>2</sup>, pool, garden

Bratislava IV - Karlova Ves - Kuklovská

**FOR RENT**

**5 000 €/Month**  
+ utilities

**Property ID: 445067**

### Condition

**New building:** yes

**Furnishing:** unfurnished

**Building material:** brick

### Size

**Number of rooms:** 7

**Usable area:** 600 m<sup>2</sup>

**Total area:** 600 m<sup>2</sup>

**Land area:** 440 m<sup>2</sup>

**Built up area:** 440 m<sup>2</sup>

### Floor

**Number of floors:** 3

### Parking

yes

### Property equipment

**Bathroom:** 3x, bath and shower

**Front garden:** yes

**Air condition:** yes

**Fire place:** yes

**Internet connection:** wifi

**Waste disposal:** separable

**Sewerage:** yes

**Swimming pool:** indoor

+421 903 526 220

office@expat.sk



add this contact to  
your mobile

## Property description

**High standard 6 bdr apt, 440 m<sup>2</sup>, furnsihed, pool, garden**

### Disposition:

total area 440 m<sup>2</sup>; situated on 3 storeys

ground floor: guest room with a bathroom, fitness, technical room

1st floor: entrance hall, living room with a fireplace and entrance to the garden, kitchen equipped with electrical appliances, storage room and laundry room

2nd floor: 4 bedrooms with closets, 2x bathroom (both bathtub and shower), entrance to the terrace overlooking the forrest from each bedroom

### Equipment:

The house is rented partly furnished. Among equipment is floor heating, ceiling cooling, electrically operated exterior blinds, security system (exterior cameras), the possibility of Internet, phone line, satellite, modified garden (irrigation system). Interior swimming pool and sauna.

### Location:

It is located in a nice and quiet area with lots of greenery and also amazing collection of amenities (public transportation, grocery stores, restaurants, schols) and quick access to the city center.

### Price and additional info:

Price does not include utilities, will be paid according to real consumption.

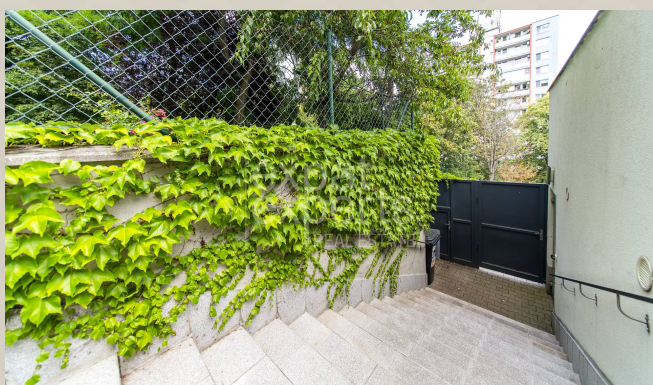
+ real estate commission.

Available parking for 3 cars.

Available immediately.

**We look forward to see you on the viewing!**





3D preview



Link to property



Video

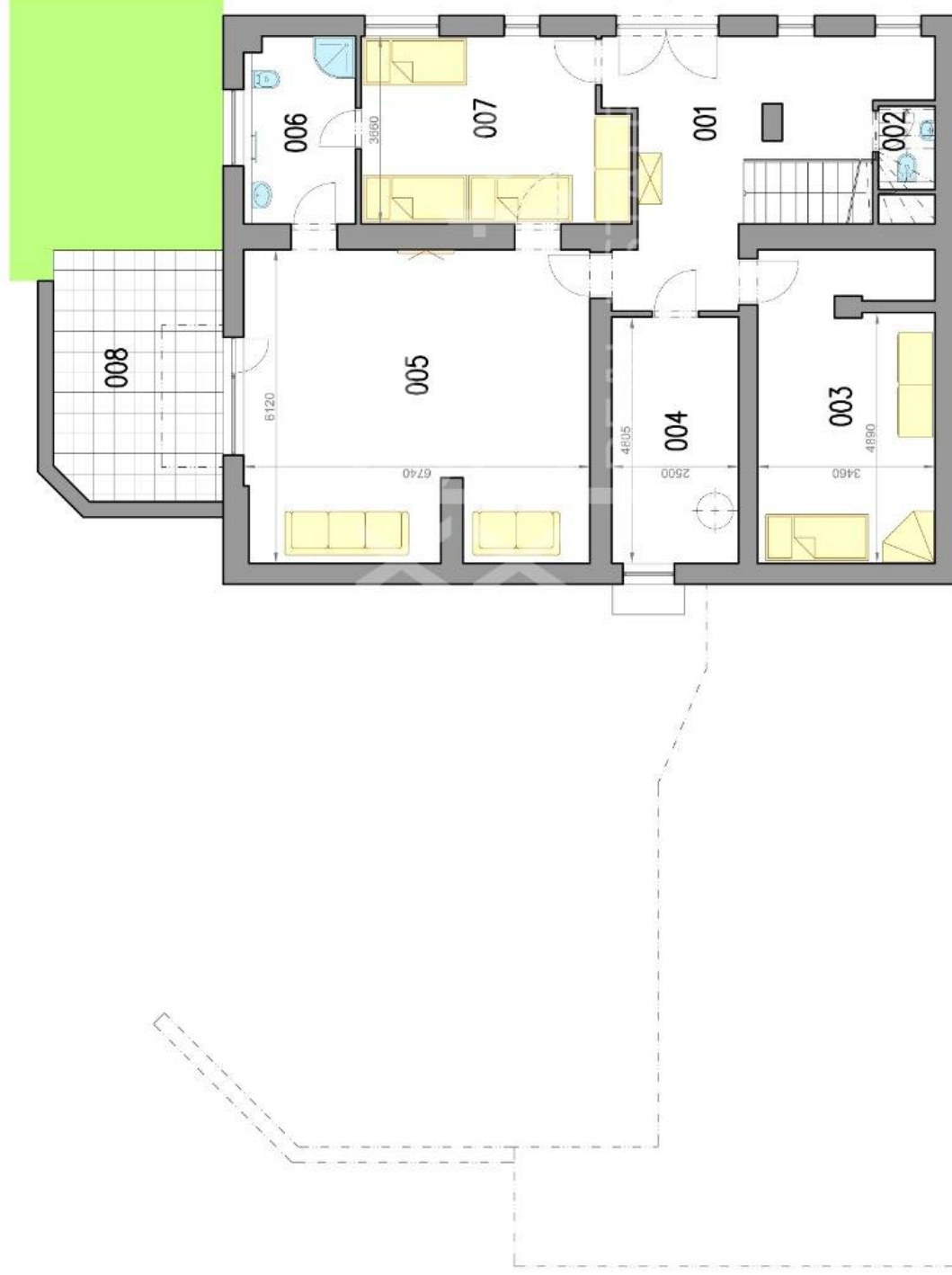
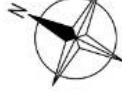


**Rodinný dom - prízemie**  
**Family house - ground floor**

**Kuklovská ulica**  
**Bratislava IV**

**LEGENDA MIESTNOSTÍ/LEGEND OF ROOMS**

001	VSTUPNÁ CHODBA/ENTRANCE HALL	20,4 m <sup>2</sup>
002	TOALETA/TOILET	1,8 m <sup>2</sup>
003	MIESTNOSŤ/ROOM	20,6 m <sup>2</sup>
004	TECH. MIESTNOSŤ/TECH. ROOM	12,0 m <sup>2</sup>
005	MIESTNOSŤ/ROOM	40,4 m <sup>2</sup>
006	KÚPEĽNÁ/BATHROOM	7,3 m <sup>2</sup>
007	IZBA/ROOM	18,2 m <sup>2</sup>
<b>PLOCHA CELKOM/TOTAL AREA</b>		<b>120,7 m<sup>2</sup></b>
008	TERASA/TERRACE	16,0 m <sup>2</sup>
009	TROJGARAZ/TIPLE GARAGE	48,0 m <sup>2</sup>



**Rodinný dom - 1. poschodie**  
**Family house - 1st floor**

**Kuklovská ulica**  
**Bratislava IV**

**LEGENDA MIESTNOSTÍ/LEGEND OF ROOMS**

101	SCHODISKO/STAIRWAY	5,6 m <sup>2</sup>
102	CHODBA/HALL	16,5 m <sup>2</sup>
103	TOALETA/TOILET	1,7 m <sup>2</sup>
104	PRÁČOVŇA/LAUNDRY ROOM	7,1 m <sup>2</sup>
105	KUCHYŇA/KITCHEN	10,2 m <sup>2</sup>
106	KOMORA/PANTRY	6,2 m <sup>2</sup>
107	JEDÁLEŇ/DINING ROOM	24,8 m <sup>2</sup>
108	OBYVACIA IZBA/LIVING ROOM	51,3 m <sup>2</sup>
109	TOALETA/TOILET	1,2 m <sup>2</sup>
110	SAUNA/SAUNA	4,0 m <sup>2</sup>
111	BAZÉN/POOL	60,8 m <sup>2</sup>

<b>PLOCHA</b>	<b>CELKOM/TOTAL AREA</b>	<b>189,4 m<sup>2</sup></b>
112	TERASA/TERRACE	30,0 m <sup>2</sup>
113	SKLAD/STORAGE	5,3 m <sup>2</sup>



**Rodinný dom - 2. poschodie**  
**Family house - 2nd floor**

**Kuklovská ulica**  
**Bratislava IV**

**LEGENDA MIESTNOSTÍ/LEGEND OF ROOMS**

201 SCHODISKO/STAIRWAY	6,8 m <sup>2</sup>
202 CHODBA/HALL	19,7 m <sup>2</sup>
203 CHODBA/HALL	3,7 m <sup>2</sup>
204 IZBA/ROOM	14,8 m <sup>2</sup>
205 KÚPEĽŇA/BATHROOM	3,5 m <sup>2</sup>
206 CHODBA/HALL	4,1 m <sup>2</sup>
207 IZBA/ROOM	14,0 m <sup>2</sup>
208 ŠATNÍK/WARDROBE	4,9 m <sup>2</sup>
209 IZBA/ROOM	16,8 m <sup>2</sup>
210 IZBA/ROOM	14,5 m <sup>2</sup>
211 KÚPEĽŇA/BATHROOM	5,0 m <sup>2</sup>
212 TOALETA/TOILET	1,6 m <sup>2</sup>
<b>PLOCHA CELKOM/TOTAL AREA</b>	<b>109,4 m<sup>2</sup></b>
213 TERASA/TERRACE	67,0 m <sup>2</sup>
214 ZELENÁ STRECHA/GREEN ROOF	50,0 m <sup>2</sup>

