



High standard 4 bdr family house, 313 m², garage, garden, Horský Park
Bratislava I - Staré Mesto - Bohúňova

FOR RENT

3 700 €/Month
+ utilities

Property ID: 477039

Condition

New building: yes
Furnishing: unfurnished

Size

Number of rooms: 5
Usable area: 313 m²
Total area: 845 m²
Land area: 845 m²
Built up area: 313 m²

Floor

Number of floors: 2

Parking

private
Garage: 2 cars

Property equipment

Bathroom: 3x, bath and shower
Front garden: yes - 1
Air condition: yes

+421 903 526 220
office@expat.sk



add this contact to
your mobile

Property description

High standard 4 bdr family house, pool, 313 m², garden, garage, Horský Park - Staré mesto;

Disposition:

total area 313 m² including terraces 78 m²; situated on 2 floors;

Ground floor: entrance hall, guest room, fully equipped kitchen with dining area connected to a spacious living room with entrance to the garden, bathroom with shower, separate WC;

Upper floor: main bedroom with king size bed and its own closet and bathroom with shower, 2 x children's room, closet, separate bathroom with bath and shower.

Basement: storage, technical room, boiler room.

Equipment:

The house is rented unfurnished; air-conditioning, exterior blinds, alarm system. To the house belongs a separate double garage on the property for 2 cars, terrace and a beautiful garden. The pool is currently covered with a fixed terrace.

Location:

The house is located in a nice area with amazing collection of amenities and a good connection to the city centre.

Price and additional info:

Price does not include utilities, will be paid according to real consumption.

+ real estate agent commission.

Rent will be possible at least for 3 years.

Available immediately, viewings possible.

We are looking forward to seeing you at the viewing!



Link to property



Video

Rodinný dom - suterén
Family house - basement

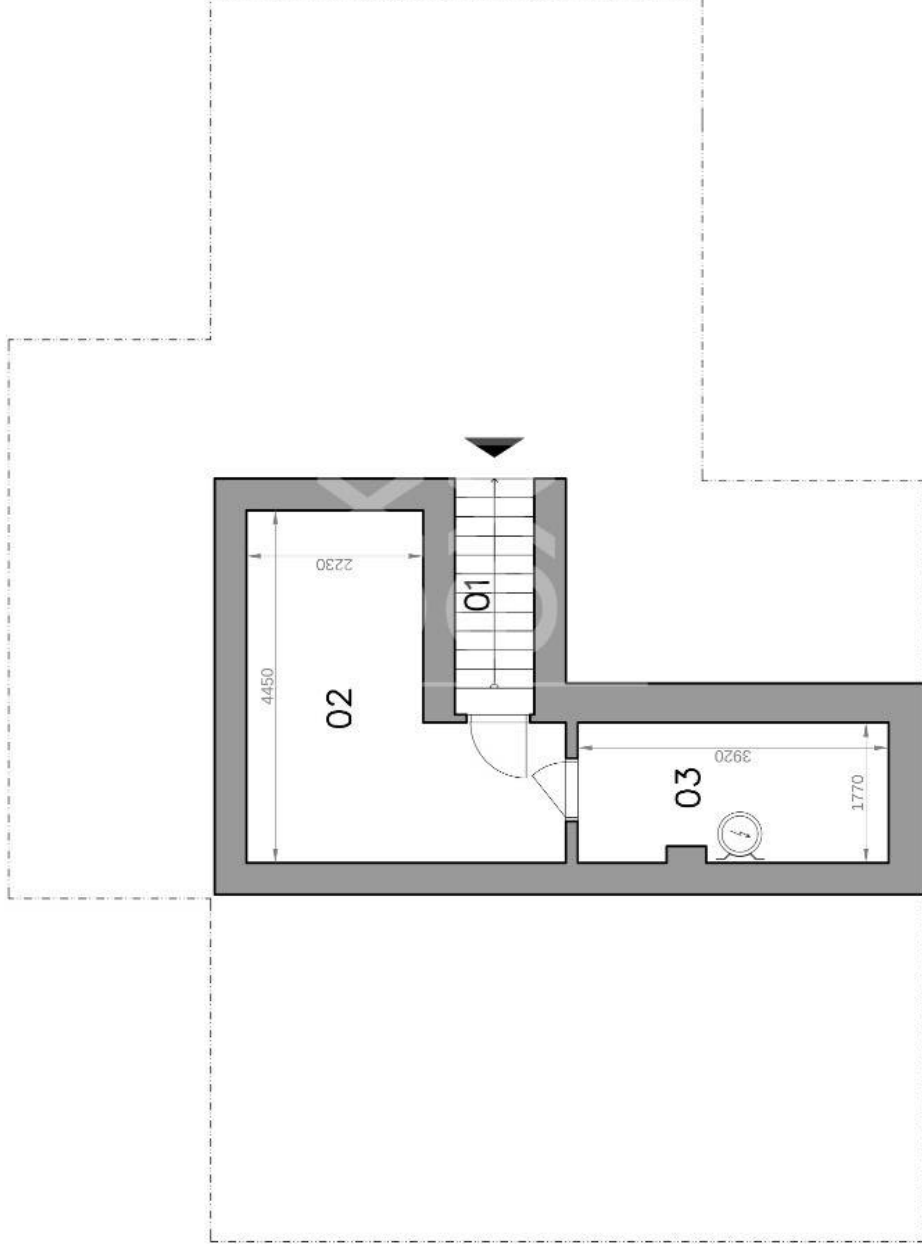
Bohúňova ulica
Bratislava I

LEGENDA MIESTNOSTÍ/LEGEND OF ROOMS

01	SCHODISKO/STAIRWAY	3,0 m ²
02	SKLAD/STORAGE	13,1 m ²
03	TECH. MIESTNOSŤ/TECH. ROOM	6,8 m ²
PLOCHA CELKOM/TOTAL AREA		22,9 m²



Výmery majú iba informatívny charakter
© Expat Experts / Ing. Miroslav Strelec



Rodinný dom - prízemie
Family house - ground floor

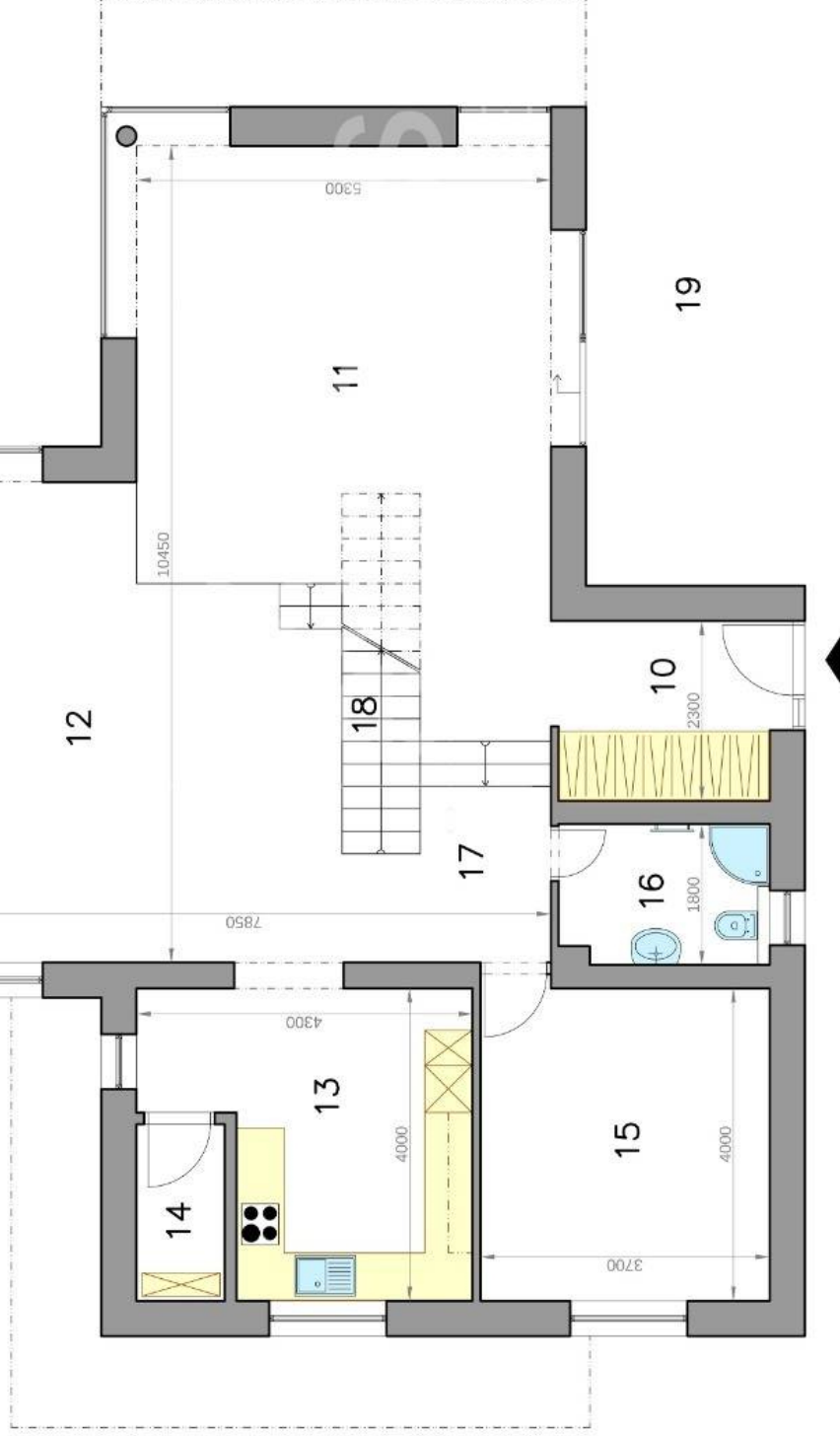
Bohúňova ulica
Bratislava I

LEGENDA MIESTNOSTÍ/LEGEND OF ROOMS

10	VSTUPNÁ CHODBA/ENTRANCE HALL	6,6 m ²
11	OBÝVACIA IZBA/LIVING ROOM	35,0 m ²
12	JEDÁLEŇ/DINING ROOM	28,4 m ²
13	KUCHYŇA/KITCHEN	14,6 m ²
14	KOMORA/PANTRY	2,6 m ²
15	IZBA/ROOM	15,0 m ²
16	KÚPEĽŇA/BATHROOM	4,6 m ²
17	CHODBA/HALL	6,1 m ²
18	SCHODISKO/STAIRWAY	4,6 m ²
PLOCHA CELKOM/TOTAL AREA		117,5 m²
19	TERASA/TERRACE	50,0 m ²



Výmery majú iba informatívny charakter
© Expat Experts / Ing. Miroslav Strelec



Rodinný dom - poschodie
Family house - floor

Bohúňova ulica
Bratislava I

LEGENDA MIESTNOSTÍ/LEGEND OF ROOMS

20	CHODBA/HALL	12,4 m ²
21	ŠATNÍK/WARDROBE	4,6 m ²
22	IZBA/ROOM	30,5 m ²
23	KÚPEĽŇA/BATHROOM	5,4 m ²
24	KÚPEĽŇA/BATHROOM	10,4 m ²
25	IZBA/ROOM	12,4 m ²
26	IZBA/ROOM	20,7 m ²
27	ŠATNÍK/WARDROBE	4,4 m ²

PLOCHA CELKOM/TOTAL AREA **100,8 m²**

28	LODŽIA/LOGGIA	4,0 m ²
29	TERASA/TERRACE	20,0 m ²

