



Exclusive 3bdr apt 146m² with terrace, in residence near castle
Bratislava I - Staré Mesto - Lichardova

FOR RENT

2 800 €/Month
+ utilities 200€

Property ID: 824599

Condition

Condition: fully re-made
Furnishing: furnished

Size

Number of rooms: 4
Usable area: 146 m²
Total area: 159 m²

Floor

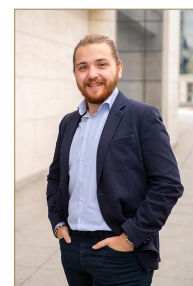
1. of 3 floors

Parking

yes
Garage: yes

Property equipment

Bathroom: 2x, bath and shower
Front garden: yes
Air condition: yes
Fire place: yes



Martin Bumbál

+421 918 583 103
office@expat.sk



add this contact to
your mobile

Property description

Exclusive 3bdr apt 146m² with terrace, in residence near castle

Disposition:

Total area 146,15m² + terasa 15,50m²; situated on the 1st floor (entrance floor) in historical vila;

Entrance hall, hallway, spacious living room with fire place connected to fully equipped kitchen with dining area, master bedroom with king size bed, wardrobe and own bathroom with shower and WC, 2x separated room, bathroom with bath and WC, separated WC.

Equipment:

Apartment is available for rent fully furnished and equipped; fully equipped kitchen, washing machine and clothes dryer, fire place, lot of storage spaces.

Air conditioning, floor heating, alarm system.

Storage spaces in the object basement.

Location:

Located in an exclusive location in Bratislava, suitable for demanding client, good connection to the highway, perfect city center access, good civic amenities.

The location is suitable for people who like quality and a quiet environment, but at the same time want to have the city "right behind the corner".

Price and additional info:

Price does not include utilities 200€+ **real estate agent commission**

Parking on the property + residential parking on the street.

We are looking forward to see you at the viewing!



Link to property



Video

4-izbový byt
3 bedroom apartment

Lichardova ulica
Bratislava I

LEGENDA MIESTNOSTÍ/LEGEND OF ROOMS

| | | |
|---------------------------------|------------------------------|----------------------------|
| 01 | VSTUPNÁ CHODBA/ENTRANCE HALL | 4,4 m ² |
| 02 | TOALETA/TOILET | 1,7 m ² |
| 03 | IZBA/ROOM | 11,1 m ² |
| 04 | CHODBA/CORRIDOR | 10,7 m ² |
| 05 | KÚPEĽŇA/BATHROOM | 7,5 m ² |
| 06 | SPÁĽŇA/BEDROOM | 24,7 m ² |
| 07 | KÚPEĽŇA/BATHROOM | 13,9 m ² |
| 08 | IZBA/ROOM | 15,8 m ² |
| 09 | OBYVACIA IZBA/LIVING ROOM | 40,7 m ² |
| 10 | KUCHYŇA/KITCHEN | 15,7 m ² |
| PLOCHA CELKOM/TOTAL AREA | | 146,2 m² |
| 11 | TERASA/TERRACE | 12,5 m ² |

