



## Design 3bdr house 150m<sup>2</sup> with spacious garden and nice terrace

Bratislava III - Koliba - Lopenícka

**FOR RENT**

**2 550 €/Month**  
+ 200€ utilities

**Property ID: 706440**

### Condition

**New building:** yes

**Furnishing:** furnished

### Size

**Number of rooms:** 4

**Usable area:** 150 m<sup>2</sup>

**Total area:** 361 m<sup>2</sup>

**Land area:** 361 m<sup>2</sup>

**Built up area:** 100 m<sup>2</sup>

### Floor

**Number of floors:** 2

### Parking

yes

### Property equipment

**Windows:** aluminium

**Heating:** own

+421 903 526 220

office@expat.sk



add this contact to  
your mobile

## Property description

### Design 3bdr house 150m<sup>2</sup> with spacious garden and nice terrace

Disposition:

total area 361 m<sup>2</sup>; situated on the two floors;

Ground floor: entrance hall, living room with a fireplace and fully equipped kitchen, bathroom with WC, winter garden with an entry to a porch and an yard.

1st floor: master bedroom with a double bed and a balcony, bedroom for children, office room, bathroom with a bathtub, shower and WC, separate WC.

#### Equipment:

The house is rented fully furnished modernly and equipped with brand new electrical appliances, fire place, outdoor blinds, air condition, alarm and oak parquet floors.

#### Location:

It is located in a nice and quiet area with lots of greenery and also amazing collection of amenities (public transportation, grocery stores, restaurants, schols) and quick access to the city center.

#### Price and additional info:

Price does not include utilities (200€) + real estate commission

Parking is possible on parking area, which is located 50m far from the house or public parking.

Available immediately.

**We are looking forward to seeing you at the viewing!**





Link to property



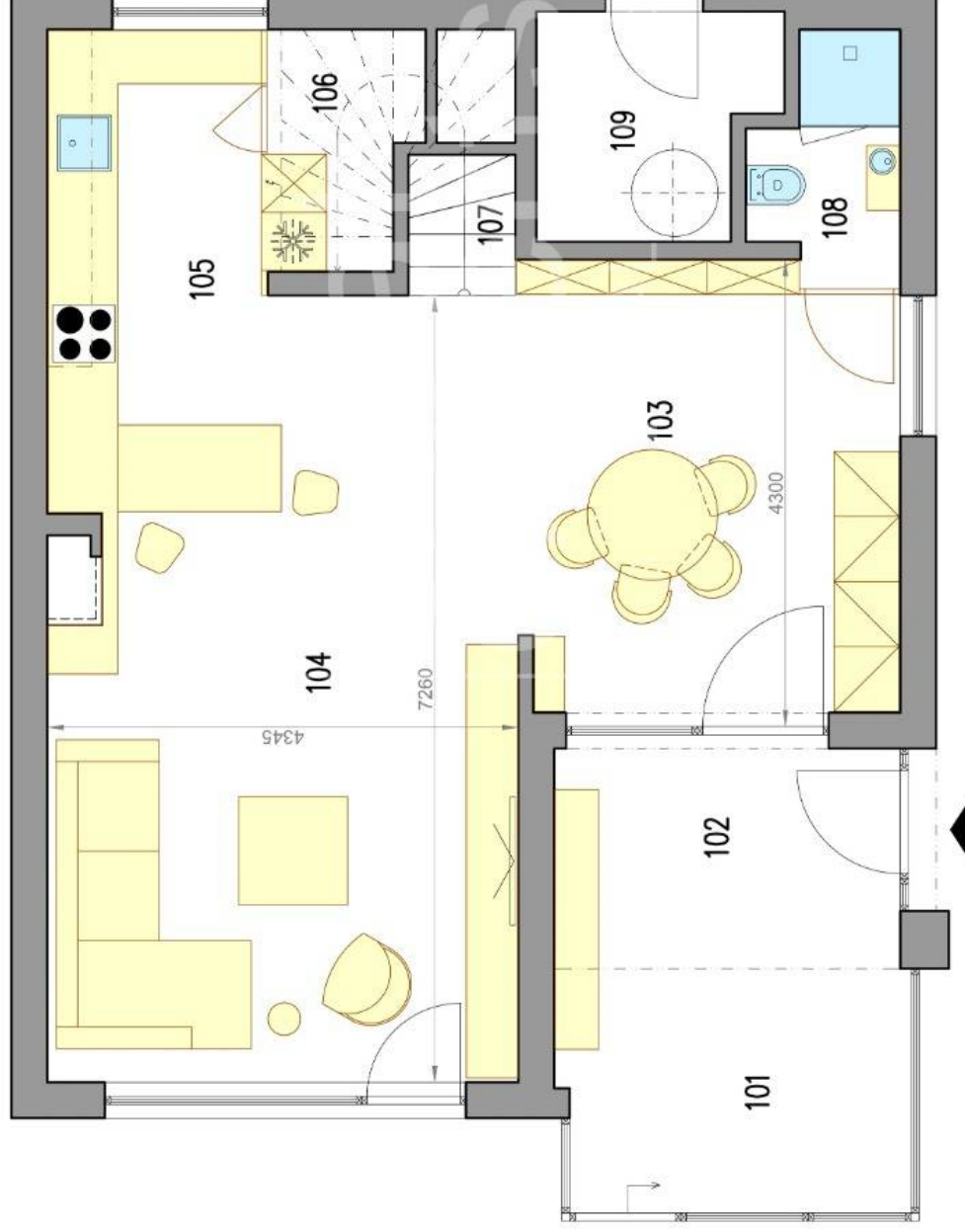
Video

**4-izbový dom - prízemie**  
**3 bedroom house - ground floor**

**Lopenícka ulica**  
**Bratislava III**

**LEGENDA MIESTNOSTÍ/LEGEND OF ROOMS**

101	ZIMNÁ ZÁHRADA/WINTER GARDEN	7,0 m <sup>2</sup>
102	VSTUPNÁ CHODBA/ENTRANCE HALL	7,0 m <sup>2</sup>
103	JEDÁLEŇ/DINING ROOM	14,4 m <sup>2</sup>
104	OBÝVACIA IZBA/LIVING ROOM	20,7 m <sup>2</sup>
105	KUCHYŇA/KITCHEN	16,0 m <sup>2</sup>
106	KOMORA/PANTRY	2,3 m <sup>2</sup>
107	SCHODISKO/STAIRWAY	5,0 m <sup>2</sup>
108	KUPEĽŇA/BATHROOM	2,7 m <sup>2</sup>
<b>PLOCHA CELKOM/TOTAL AREA</b>		<b>75,1 m<sup>2</sup></b>
109	TECH. MIESTNOSŤ/TECH. ROOM	4,3 m <sup>2</sup>
110	TERASA/TERRACE	35,0 m <sup>2</sup>
111	ZATRAVNENÁ TERASA/GRASS TERRACE	27,0 m <sup>2</sup>
112	ZÁHRADA/GARDEN	136,0 m <sup>2</sup>





**4-izbový dom - poschodie**  
**3 bedroom house - floor**

**Lopenícka ulica**  
**Bratislava III**

**LEGENDA MIESTNOSTÍ/LEGEND OF ROOMS**

201 CHODBA/HALL	4,3 m <sup>2</sup>
202 TOALETA/TOILET	1,5 m <sup>2</sup>
203 PRACOVŇA/WORKROOM	11,6 m <sup>2</sup>
204 IZBA/ROOM	16,1 m <sup>2</sup>
205 SPÁĽŇA/BEDROOM	15,4 m <sup>2</sup>
206 KÚPEĽŇA/BATHROOM	8,3 m <sup>2</sup>
<b>PLOCHA CELKOM/TOTAL AREA</b>	<b>57,2 m<sup>2</sup></b>
207 BALKÓN/BALCONY	8,0 m <sup>2</sup>



Výmery majú iba informatívny charakter  
© Expat Experts / Ing. Miroslav Střelec

